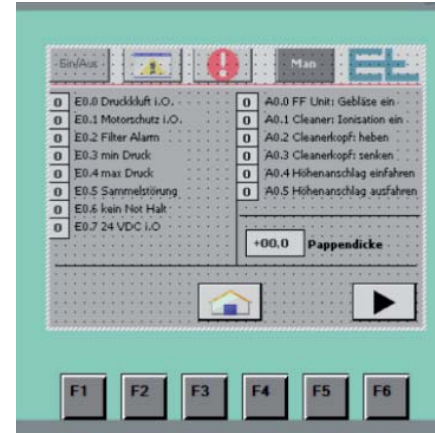
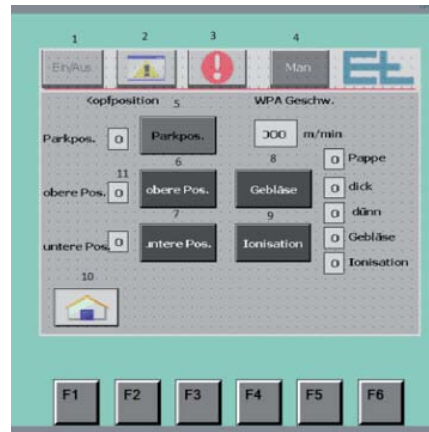


Operator interface via touch screen

- + Status display
- + Language setup
- + Operation of key functions
- + Calibration tools



Technical Data

General Specification

Web width	2.200 mm / 2.500 mm / 2.800 mm
Web speed	max 450 m/min

Fan Specification

	one head	two/three heads
Size (h/w/d)	2.680/950/950 mm	(2x) 2.680/950/950 mm
Power consumption	4.0 kW	(2x) 4.0 kW
Nominal current	8.1 Amps	(2x) 8.1 Amps
Air volume (at motor)	4.000m³/h	(2x) 4.000m³/h
Noise level	73 dB(A)	76 dB(A)
Voltage	400 V	400 V
Frequency	50Hz	50Hz
Protection Class	IP 55	IP 55
Atax Rating	II 3 D	II 3 D

Filter Specification

	one head	two/three heads
Type of filter	cartridge	cartridge
Number of filter plates	4	(2x) 4
Filter surface m²	24	(2x) 24
Compressed air connection	5-6 bar	5-6 bar



System Function

In our continuous effort to supply system solutions for our industry, E+L Corrugated has developed the product group ELClean®, automatic, non-contact board and sheet cleaning systems.

The newly designed double sided cleaning head comprise of two vacuum zones (entry and exit zone) and an air knife zone (center zone). The air knife zone houses our anti-static bar, which eliminates static charge on the running web/sheet.

The simultaneous high velocity air stream blows dust particles to the entry and exit side of the head, which then vacuum the contaminated air off.

In the automatic filter fan unit, the dust is removed and the air is circulated back to the air knife sections of the head.

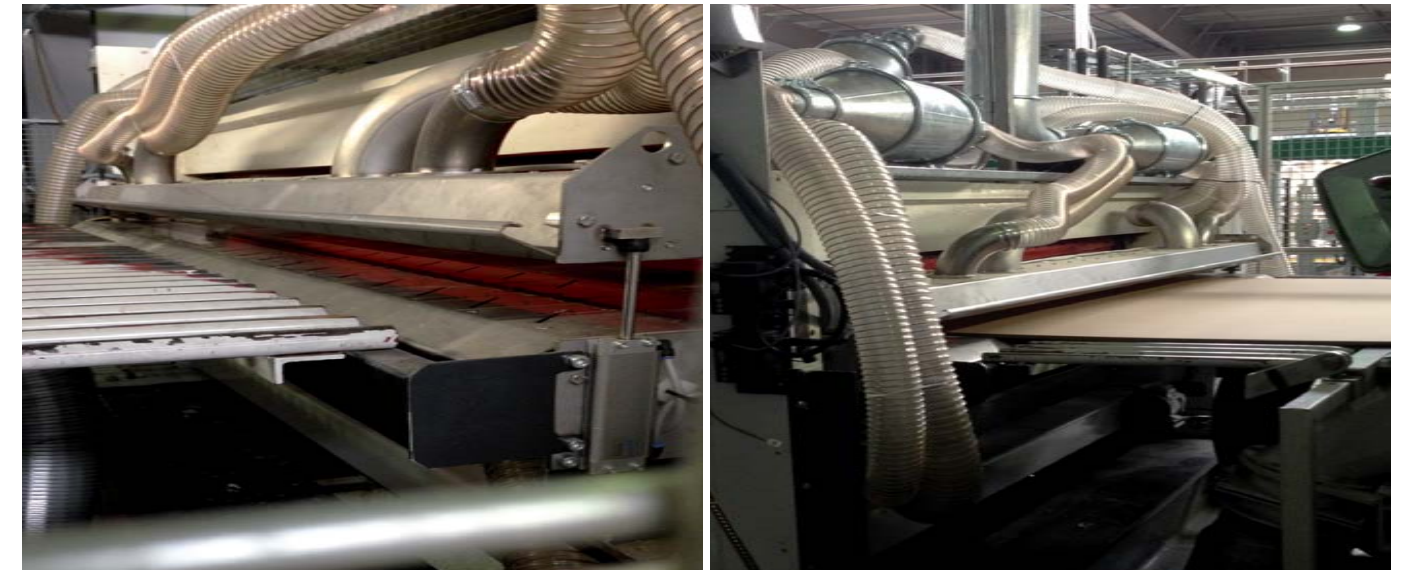
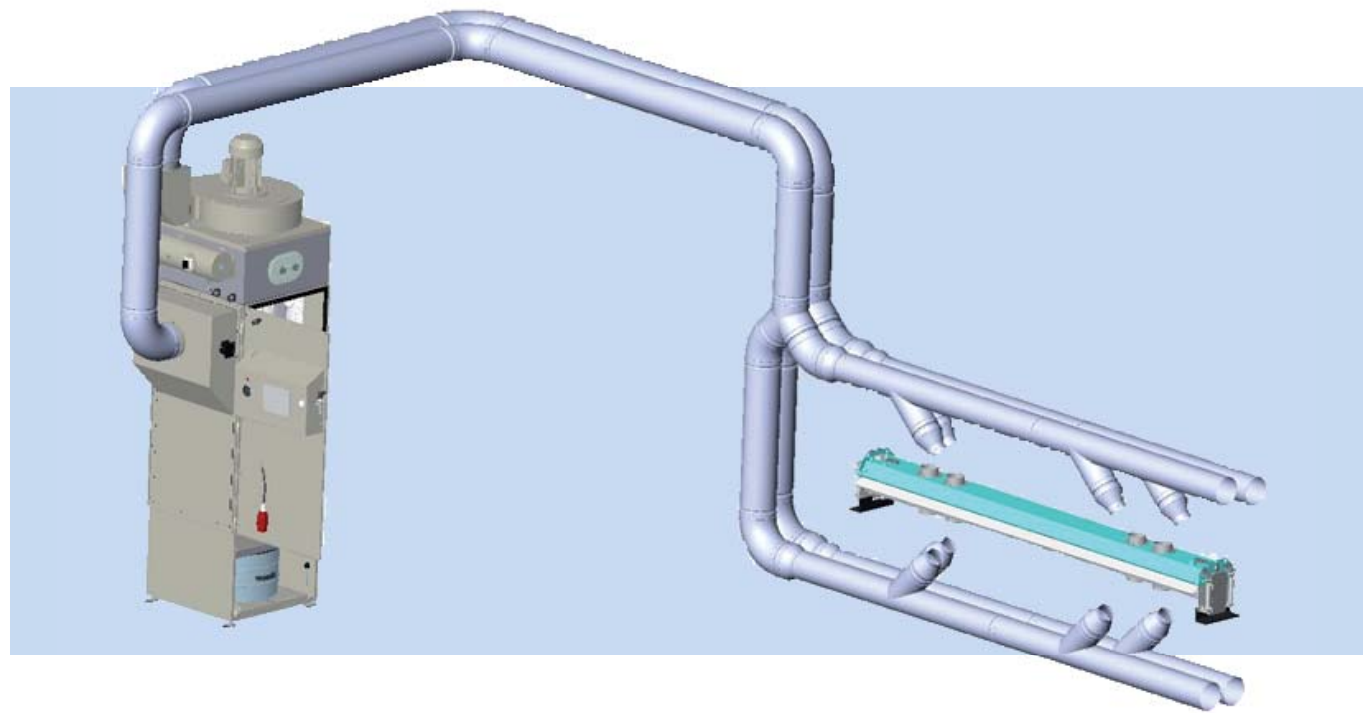
The system automatically recognizes web height changes due to flute caliper or single to multi wall changes, and then adjusts the head distance accordingly.

At order change, the head moves automatically to its park position to avoid tail in jams.

A state of the art touch screen operations unit displays system status and enables the operator to manually operate the equipment.

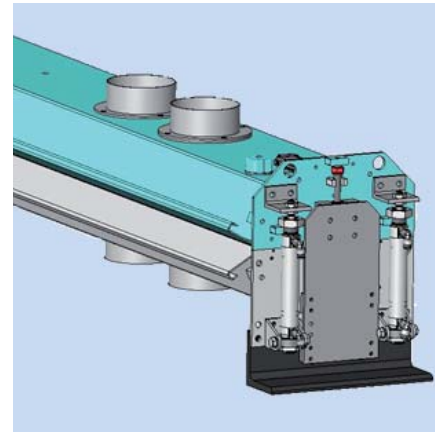
ELClean® can furthermore be linked to our ELCorruMatic® corrugator automation system, in order to be operated and status displayed through its multi-use touch screens.





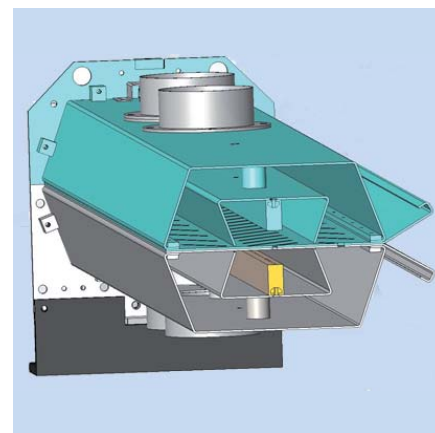
Features

- + New mechanical design (2 hose design) for reduced ducting
- + Mechanical adjustments for automatic flute height settings on all 3 cleaning heads.
- + Pneumatic cylinders for automatic park position. (100 mm with order change signal)
- + Head after slitter scorer (top/bottom of web)
- + Head after knife (top/bottom of web)
- + Automatic filter with polyester antistatic filter plates for easy dust handling
- + Filter collection bin for easy dust collection
- + Interfaceable to E+L System Network ELCorruMatic®



Description

- + Web / sheet cleaner (after slitter scorer)
- + Cleaner (after knife)
- + Automatic filter fan unit (self cleaning)
- + Active ionisation system included in air knife chamber of cleaner head
- + With control box
- + Set of hard and flex tubing for connection of cleaning head to filter unit (scope of delivery)



Key Factors

- + Non Contact, full width board cleaning
- + Cleaning heads above and under the web, w/ antistatic device
- + Automatic raiser/lower with order change
- + Automatic gap adjustment on board height change
- + Automatic filter for continuous production
- + Self cleaning filter with discharge hopper
- + Cleaning after the knife, full width top/bottom head
- + Closed air circuit, no environmental dust pollution
- + Clean sheets in brown board or pre-print production
- + Much reduced shingling dust
- + Reduced washing cycle for post-print - **5 to 7 Times prolonged cycle**
- + Reduced metal particles from slitter blades
- + Reduced warranty claims from your high graphic customers

