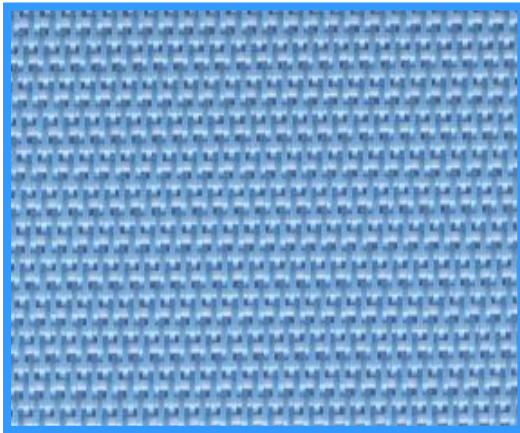


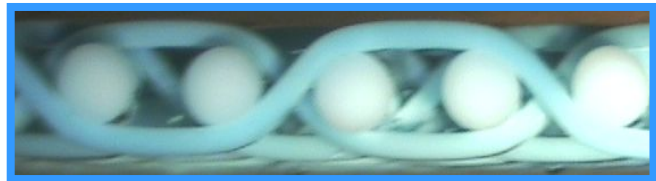
Flatwire-Dryer fabric

Type: Monoflat-F



Application:

- Dryer fabric
- Conveyor belt



Characteristics:

- non marking surface
- very safe guiding conditions



Specifications

Technical data:

- Structure - 2-layer dryer fabric
- Machine direction - PET monofil flat
- Cross-machine direction - PET monofil 0,6 mm
- Edge sealing - heat resistance up to 160°C
- hydrolysis resistance
- edges are welded
- Recommended tension - 2,0 kN/m
- Max. tensile loading - 4,0 kN/m

■ Seams:

- Spiral seam, easy to join

Type	Air permeability		Weight g/m ²	Thickness mm
	CFM (125 Pa)	l/min (200 Pa)		
Monoflat-F/200	200	760	1150	1,60
Monoflat-F/250	250	950	1150	1,60
Monoflat-F/300	300	1150	1150	1,60
Monoflat-F/400	400	1530	1150	1,60