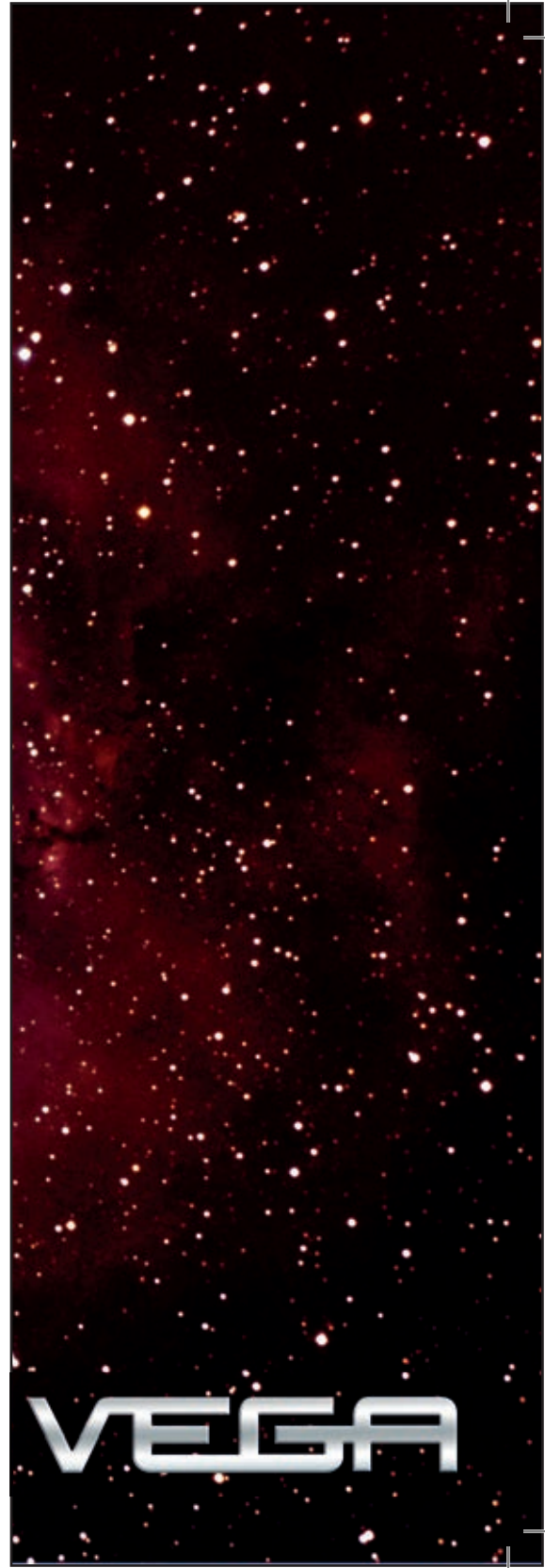
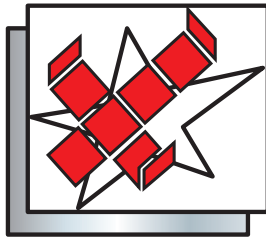


B O X E S   B O O K

specialist in folder gluer for over 70 years

VEGA





**VEGGA**  
G R O U P

## P R E F A Z I O N E

Questo libro è stato realizzato con lo scopo di guidarLa nell'**identificazione dei dispositivi** studiati da Vega, montabili sulle macchine VEGA anche successivamente all'acquisto, necessari per realizzare le scatole riportate nelle sezioni che seguono.

Nella **legenda** sono spiegati i significati delle lettere che identificano i dispositivi necessari. Le informazioni presenti in questo documento sono fornite a titolo indicativo e seguono la continua evoluzione delle nostre piega incollatrici.

Il nostro ufficio tecnico è a disposizione per lo **studio** e la **realizzazione** di **dispositivi ad-hoc** per scatole che non rientrano nelle tipologie rappresentate.

## P R E F A C E

This book has been done in order to help you in **identifying** the **attachments** realized by VEGA to be installed on VEGA machines also later on, necessary to make the boxes mentioned in the following sections.

The **legend** explains the meaning of the letters that identify the requested attachments. The information given in this document is supplied approximately and follows the continuous evolution of our folder-gluer.

Our Technical Department is at your full disposal for **studying** and **realizing suitable devices** for the boxes not shown in this book.

La copia o la distribuzione di questo documento è vietata a meno di autorizzazione scritta di Vega s.r.l. Alcune scatole sono protette da brevetto, pertanto possono essere prodotte soltanto su licenza.

---

Copy or distribution of this document not admitted unless written authorization is supplied by Vega s.r.l. Some kind of boxes shown herewith are under patent, therefore they can be only realized on licence.

# A S S O C I A Z I O N I A C O D I C I F E F C O

## F E F C O C O D E S A S S O C I A T I O N S

CODICE FEFCO FEFCO CODE	CODICE VEGA VEGA CODE	CODICE VEGA SIMILE SIMILAR VEGA CODE	CODICE FEFCO FEFCO CODE	CODICE VEGA VEGA CODE	CODICE VEGA SIMILE SIMILAR VEGA CODE	CODICE FEFCO FEFCO CODE	CODICE VEGA VEGA CODE	CODICE VEGA SIMILE SIMILAR VEGA CODE
0100	--		0225		1.44	0320		1.17
0110	--		0226	--		0321		1.35
0200		1.17	0227	1.32		0322		4.01
0201	1.01		0228		10.19-10.20	0323		4.01
0202	1.01		0229		1.01	0325	--	
0203	1.01		0230	1.26		0330	--	
0204		1.01	0231		1.26	0331	--	
0205	1.01		0300	--		0350	--	
0206		1.01	0301	--		0351	--	
0207	--		0302	--		0352	--	
0208	--		0303	9.30		0400	--	
0209	1.01		0304	9.01		0401	--	
0210	1.09		0306	--		0402	--	
0211		1.04	0307	--		0403	--	
0212		1.14	0308	9.42		0404	--	
0214		1.01	0309	9.40		0405	--	
0215	1.05		0310	--		0406		1.01
0216		1.05	0312	--		0409	1.26	
0217		1.05	0313	--		0410		1.01
0218		1.34	0314	--		0411	1.26	

A S S O C I A Z I O N I A C O D I C I F E F C O  
 F E F C O C O D E S A S S O C I A T I O N S

CODICE FEFCO FEFCO CODE	CODICE VEGA VEGA CODE	CODICE VEGA SIMILE SIMILAR VEGA CODE	CODICE FEFCO FEFCO CODE	CODICE VEGA VEGA CODE	CODICE VEGA SIMILE SIMILAR VEGA CODE	CODICE FEFCO FEFCO CODE	CODICE VEGA VEGA CODE	CODICE VEGA SIMILE SIMILAR VEGA CODE
0412	--		0436	--		0458	--	
0413	--		0437	--		0459	--	
0415	--		0440	--		0460	--	
0416	--		0441	--		0470	--	
0420	--		0442	--		0471	--	
0421	--		0443	--		0472	--	
0422	--		0444	--		0473	--	
0423	--		0445	--		0501	1.24	
0424	--		0446	--		0502	1.24	
0425	--		0447	--		0503	1.24	
0426	--		0448	9.42		0504	--	
0427	--		0449	9.40		0505	--	
0428	--		0450	9.30		0507	--	
0429	--		0451	9.01		0509	--	
0430	--		0452	--		0510	--	
0431	--		0453	--		0511	--	
0432	--		0454	--		0512	--	
0433	--		0455	--		0601	--	
0434	--		0456	--		0602	--	
0435	--		0457	--		0605	--	

A S S O C I A Z I O N I A C O D I C I F E F C O

F E F C O C O D E S A S S O C I A T I O N S

CODICE FEFCO FEFCO CODE	CODICE VEGA VEGA CODE	CODICE VEGA SIMILE SIMILAR VEGA CODE	CODICE FEFCO FEFCO CODE	CODICE VEGA VEGA CODE	CODICE VEGA SIMILE SIMILAR VEGA CODE	CODICE FEFCO FEFCO CODE	CODICE VEGA VEGA CODE	CODICE VEGA SIMILE SIMILAR VEGA CODE
0606	--		0748	9.02		0910	--	
0607	--		0751	9.28		0911	--	
0608	--		0752	--		0913	--	
0610	--		0759	9.07		0914	--	
0615	--		0761		9.21	0920	--	
0616	--		0770		9.01	0921	--	
0620	--		0771	--		0929	--	
0621	--		0772	--		0930	--	
0700	2.15		0773	--		0931	--	
0701	3.02		0774	--		0932	--	
0703		3.02	0900	--		0933	--	
0711		3.21	0901	--		0934	--	
0712		2.01	0902	--		0935	--	
0713	2.01		0903	--		0940	--	
0714		2.19	0904	--		0941	--	
0715	10.29		0905	--		0942	--	
0716		10.31	0906	--		0943	--	
0717	10.44		0907	--		0944	--	
0718	9.41		0908	--		0945	--	
0747	10.45		0909	--		0946	--	

A S S O C I A Z I O N I A C O D I C I F E F C O  
 F E F C O C O D E S A S S O C I A T I O N S

CODICE FEFCO FEFCO CODE	CODICE VEGA VEGA CODE	CODICE VEGA SIMILE SIMILAR VEGA CODE
0947	--	
0948	--	
0949	--	
0950	--	
0951	--	

CODICE FEFCO FEFCO CODE	CODICE VEGA VEGA CODE	CODICE VEGA SIMILE SIMILAR VEGA CODE
0965	--	
0966	--	
0967	--	
0970	--	
0971	--	

CODICE FEFCO FEFCO CODE	CODICE VEGA VEGA CODE	CODICE VEGA SIMILE SIMILAR VEGA CODE
0972	--	
0973	--	
0974	--	
0975	--	
0976	--	

# L E G E N D A

## L E G E N D

- A** Macchina Standard  
*Standard Machine*
- B** Dispositivo scatole con fondo a chiusura automatica  
*Crash lock bottom device*
- C** Incollatori Superiori ( a spruzzo o a disco)  
*Upper gluing unit (spray or wheel)*
- D** Incollatore inferiore destro  
*Right lower gluing unit*
- E** Dispositivo fondo automatico rovesciato  
*Reverse crash lock bottom device*
- F** Incollatori superiori in rompipiega (a spruzzo o a disco)  
*Upper gluing unit in prefolding (spray or wheel)*
- G** Dispositivo per scatole a doppia parete  
*Double wall device*
- H** Dispositivo per buste dischi  
*Record sleeve device*
- I** Dispositivo per buste speciali (invio campioni indispensabile)  
*Special envelope device (please submit samples)*
- J** Dispositivo per buste a soffiato  
*Bellows (Z-fold) type sleeve device*
- K** Incollatore inferiore sinistro  
*Left lower gluing unit*
- L** Dispositivo per scatole coniche (invio campioni indispensabile)  
*Conical box device (please submit samples)*
- M** Dispositivo per contenitori conici  
*Conical sleeve device*
- N** Dispositivo per scatole con 4 angoli incollati  
*Four corners glued box device*
- O** Dispositivo per scatole con 6 angoli incollati  
*Six corners glued box device*
- P** Dispositivo per scatole esagonali  
*Exagonal box device*
- Q** Incollatori a spruzzo vinilici e/o hot melt  
*Cold and/or hot-melt spray gluing unit*
- R** Dispositivo per scatole a scomparti  
*Partitions box device*
- S** Accessorio per scatole speciali (invio campioni indispensabile)  
*Special box attachments (please submit samples)*
- T** Modulo aggiuntivo  
*Additional module*
- U** Modulo aggiuntivo con doppia parete  
*Additional module with double wall*
- V** Modulo aggiuntivo con piega posteriore  
*Additional module with rear fold*
- W** Dispositivo per scatole con dorso  
*Capacity folders device*



TABELLA MODELLI - ACCESSORI  
 MODELS - ACCESSORIES CHART

TIPI DI SCATOLE BOXES TYPE	VEGA AQUILA 62 82 102	VEGA FRECCIA 60	VEGA POLARIS 90 110	VEGA RIGEL 145 170	VEGA ALTAIR 170 200 240 290	VEGA ADF 170 200 240 290
1.01	A	A	A	A-K	A-K	
1.02	A	A	A	A-K	A-K	
1.03	A	A	A	A-K	A-K	
1.04	A	A	A	A-K	A-K	
1.05	A	A	A	A-K	A-K	
1.06	A	A	A	A-K	A-K	
1.07	A	A	A	A-K	A-K	
1.08	A	A	A	A-K	A-K	
1.09	A	A	A	A-K	A-K	
1.10	A	A	A	A-K	A-K	
1.11	A	A	A	A-K	A-K	
1.12	A	A	A	A-K	A-K	
1.13	A	A	A	A-K	A-K	
1.14	A	A	A	A-K	A-K	
1.15	A	A	A	A-K	A-K	
1.16	A	A	A	A-K	A-K	
1.17	A	A	A	A-K	A-K	
1.18	A	A	A	A-K	A-K	
1.19	A	A	A	A-K	A-K	
1.20	A	A	A	A-K	A-K	

TIPI DI SCATOLE BOXES TYPE	VEGA AQUILA 62 82 102	VEGA FRECCIA 60	VEGA POLARIS 90 110	VEGA RIGEL 145 170	VEGA ALTAIR 170 200 240 290	VEGA ADF 170 200 240 290
1.21	A	A	A	A-K	A-K	
1.22	A	A	A	A-K	A-K	
1.23	A	A	A	A-K	A-K	
1.24	A	A	A	A-K	A-K	
1.25	A	A	A	A-K	A-K	
1.26	A	A	A	A-K	A-K	
1.27	A	A	A	A-K	A-K	
1.28	A	A	A	A-K	A-K	
1.29	A	A	A	A-K	A-K	
1.30	A	A	A	A-K	A-K	
1.31	A	A	A	A-K	A-K	
1.32	A	A	A	A-K	A-K	
1.33	A	A	A	A-K	A-K	
1.34	A	A	A	A-K	A-K	
1.35	A	A	A	A-K	A-K	
1.36	A	A	A	A-K	A-K	
1.37	A	A	A	A-K	A-K	
1.38	A	A	A	A-K	A-K	
1.39	A	A	A	A-K	A-K	
1.40	A	A	A	A-K	A-K	

# TABELLA MODELLI - ACCESSORI

## MODELS - ACCESSORIES CHART

TIPI DI SCATOLE BOXES TYPE	VEGA AQUILA 62 82 102	VEGA FRECCIA 60	VEGA POLARIS 90 110	VEGA RIGEL 145 170	VEGA ALTAIR 170 200 240 290	VEGA ADF 170 200 240 290
1.41	A	A	A	A-K	A-K	
1.42	A	A	A	A-K	A-K	
1.43	A	A	A	A-K	A-K	
1.44	A	A	A	A-K	A-K	
1.45	A	A	A	A-K	A-K	
1.46	A	A	A	A-K	A-K	
1.48	A-C	A-C	A-C	A-C	A-C	
1.49	A-C	A-C	A-C	A-C	A-C	
1.50	A-C	A-C	A-C	A-C	A-C	
2.01	A-B-C	A-B-C	A-B-C	A-C	A-C	
2.02	A-B-C	A-B-C	A-B-C	A-C	A-C	
2.03	A-B-C	A-B-C	A-B-C	A-C	A-C	
2.04	A-B-C	A-B-C	A-B-C	A-C	A-C	
2.05	A-B-C	A-B-C	A-B-C	A-C	A-C	
2.06	A-B-C	A-B-C	A-B-C	A-C	A-C	
2.07	A-B-C	A-B-C	A-B-C	A-C	A-C	
2.08	A-B-C	A-B-C	A-B-C	A-C	A-C	
2.09	A-B-C	A-B-C	A-B-C	A-C	A-C	
2.10	A-B-C	A-B-C	A-B-C	A-C	A-C	
2.11	A-B-C	A-B-C	A-B-C	A-C	A-C	

TIPI DI SCATOLE BOXES TYPE	VEGA AQUILA 62 82 102	VEGA FRECCIA 60	VEGA POLARIS 90 110	VEGA RIGEL 145 170	VEGA ALTAIR 170 200 240 290	VEGA ADF 170 200 240 290
2.12	A-B-C	A-B-C	A-B-C	A-C	A-C	
2.13	A-B-C	A-B-C	A-B-C	A-C	A-C	
2.14	A-B-C	A-B-C	A-B-C	A-C	A-C	
2.15	A-B-C	A-B-C	A-B-C	A-C	A-C	
2.16	A-B-C	A-B-C	A-B-C	A-C	A-C	
2.17	A-B-C	A-B-C	A-B-C	A-C	A-C	
2.18	A-B-C	A-B-C	A-B-C	A-C	A-C	
2.19	A-B-C	A-B-C	A-B-C	A-C	A-C	
2.20	A-B-C	A-B-C	A-B-C	A-C	A-C	
2.21	A-B-C	A-B-C	A-B-C	A-C	A-C	
2.22	A-B-C	A-B-C	A-B-C	A-C	A-C	
2.23	A-B-C	A-B-C	A-B-C	A-C	A-C	
2.24	A-B-C	A-B-C	A-B-C	A-C	A-C	
2.26	A-B-C	A-B-C	A-B-C	A-C	A-C	
2.27	A-B-C	A-B-C	A-B-C	A-C	A-C	
3.01	A-B-C	A-B-C	A-B-C	A-C	A-C	
3.02	A-B-C	A-B-C	A-B-C	A-C	A-C	
3.03	A-B-C	A-B-C	A-B-C	A-C	A-C	
3.04	A-B-C	A-B-C	A-B-C	A-C	A-C	
3.05	A-B-C	A-B-C	A-B-C	A-C	A-C	

# TABELLA MODELLI - ACCESSORI

## MODELS - ACCESSORIES CHART

TIPI DI SCATOLE BOXES TYPE	VEGA AQUILA 62 82 102	VEGA FRECCIA 60	VEGA POLARIS 90 110	VEGA RIGEL 145 170	VEGA ALTAIR 170 200 240 290	VEGA ADF 170 200 240 290
	3.06	A-B-C	A-B-C	A-B-C	A-C	A-C
3.07	A-B-C	A-B-C	A-B-C	A-C	A-C	
3.20	A-B-C-D	A-B-C-D	A-B-C-D	A-C	A-C	
3.21	A-B-C-D	A-B-C-D	A-B-C-D	A-C	A-C	
4.01	A-C	A-C	A-C	A-C	A-C	
4.02	A-B-F-G	A-B-F-G	A-B-F-G	A-Q-U	A-Q-U	
4.03	A-B-F-G	A-B-F-G	A-B-F-G	A-Q-U	A-Q-U	
4.04	A-B-F-G	A-B-F-G	A-B-F-G	A-Q-U	A-Q-U	
4.05	A-B-F-G	A-B-F-G	A-B-F-G	A-Q-U	A-Q-U	
4.06	A-B-F-G	A-B-F-G	A-B-F-G	-	-	
4.07	A-B-F-G	A-B-F-G	A-B-F-G	-	-	
4.08	A-B-F-G	A-B-F-G	A-B-F-G	A-Q-U	A-Q-U	
4.09	A-B-F-G	A-B-F-G	A-B-F-G	-	-	
4.10	A-B-F-G	A-B-F-G	A-B-F-G	-	-	
4.11	A-B-F-G	A-B-F-G	A-B-F-G	A-Q-U	A-Q-U	
5.01	A-B-F-H	A-B-F-H	A-B-F-H			
5.02	A-B-F-H	A-B-F-H	A-B-F-H			
5.03	A-B-F-H	A-B-F-H	A-B-F-H			
5.04	A-B-F-H	A-B-F-H	A-B-F-H			
5.05	A-B-F-H	A-B-F-H	A-B-F-H			

TIPI DI SCATOLE BOXES TYPE	VEGA AQUILA 62 82 102	VEGA FRECCIA 60	VEGA POLARIS 90 110	VEGA RIGEL 145 170	VEGA ALTAIR 170 200 240 290	VEGA ADF 170 200 240 290
	5.06	A-B-F-H-J	A-B-F-H-J	A-B-F-H-J		
5.15	A-B-C-H	A-B-C-H	A-B-C-H			
5.16	A-B-C-H	A-B-C-H	A-B-C-H			
5.20	A-B-F-H-I	A-B-F-H-I	A-B-F-H-I			
5.21	A-B-F-H-I	A-B-F-H-I	A-B-F-H-I			
5.22	A-B-F-H-I	A-B-F-H-I	A-B-F-H-I			
5.23	A-B-F-H	A-B-F-H	A-B-F-H			
5.24	A-B-F-H	A-B-F-H	A-B-F-H			
5.25	A-B-F-H	A-B-F-H	A-B-F-H			
5.26	A-B-F-H	A-B-F-H	A-B-F-H			
5.31	A-B-H-Q-W	A-B-H-Q-W	A-B-H-Q-W			
5.32	A-B-H-Q-W	A-B-H-Q-W	A-B-H-Q-W			
5.33	A-B-H-Q-W	A-B-H-Q-W	A-B-H-Q-W			
6.01	A-B-F-L	A-B-F-L	A-B-F-L			
6.02	A-B-F-L	A-B-F-L	A-B-F-L			
6.03	A-B-F-L	A-B-F-L	A-B-F-L			
6.04	A-B-F-L	A-B-F-L	A-B-F-L			
6.05	A-B-F-L	A-B-F-L	A-B-F-L			
6.06	A-B-F-L	A-B-F-L	A-B-F-L			
6.07	A-B-F-L	A-B-F-L	A-B-F-L			

# TABELLA MODELLI - ACCESSORI

## MODELS - ACCESSORIES CHART

TIPI DI SCATOLE BOXES TYPE	VEGA AQUILA 62 82 102	VEGA FRECCIA 60	VEGA POLARIS 90 110	VEGA RIGEL 145 170	VEGA ALTAIR 170 200 240 290	VEGA ADF 170 200 240 290
	7.01	A-B-F-L	A-B-F-L	A-B-F-L		
7.02	A-B-F-L	A-B-F-L	A-B-F-L			
7.03	A-B-F-L	A-B-F-L	A-B-F-L	A-C	A-C	
7.04	A-B-F-L	A-B-F-L	A-B-F-L			
8.01	A-B-F-M	A-B-F-M	A-B-F-M			
8.02	A-B-F-M	A-B-F-M	A-B-F-M			
9.01	A-B-C-N	A-B-C-N	A-B-C-N	A-C-N	A-C-N	
9.02	A-B-C-N-O	A-B-C-N-O	A-B-C-N-O	A-C-N	A-C-N	
9.03	A-B-C-N	A-B-C-N	A-B-C-N	A-C-N	A-C-N	
9.04	A-B-C-N	A-B-C-N	A-B-C-N	A-C-N	A-C-N	
9.05	A-B-C-N-O	A-B-C-N-O	A-B-C-N-O	A-C-N	A-C-N	
9.06	A-B-C-N	A-B-C-N	A-B-C-N	A-C-N	A-C-N	
9.07	A-B-C-N	A-B-C-N	A-B-C-N	A-C-N	A-C-N	
9.08	A-B-C-N	A-B-C-N	A-B-C-N	A-C-N	A-C-N	
9.09	A-B-C-N	A-B-C-N	A-B-C-N	A-C-N	A-C-N	
9.10	A-B-C-N-O	A-B-C-N-O	A-B-C-N-O	A-C-N	A-C-N	
9.11	A-B-C-N	A-B-C-N	A-B-C-N	A-C-N	A-C-N	
9.12	A-B-C-N	A-B-C-N	A-B-C-N	A-C-N	A-C-N	
9.13	A-B-C-N-O	A-B-C-N-O	A-B-C-N-O	A-C-N	A-C-N	
9.14	A-B-C-N-O	A-B-C-N-O	A-B-C-N-O	A-C-N	A-C-N	

TIPI DI SCATOLE BOXES TYPE	VEGA AQUILA 62 82 102	VEGA FRECCIA 60	VEGA POLARIS 90 110	VEGA RIGEL 145 170	VEGA ALTAIR 170 200 240 290	VEGA ADF 170 200 240 290
	9.20	A-B-C-N-O	A-B-C-N-O	A-B-C-N-O	A-C-N-O	A-C-N-O
9.21	A-B-C-N-O	A-B-C-N-O	A-B-C-N-O	A-C-N-O	A-C-N-O	
9.22	A-B-C-N-O	A-B-C-N-O	A-B-C-N-O	A-C-N-O	A-C-N-O	
9.23	A-B-C-N-O	A-B-C-N-O	A-B-C-N-O	A-C-N-O	A-C-N-O	
9.24	A-B-C-N-O	A-B-C-N-O	A-B-C-N-O	A-C-N-O	A-C-N-O	
9.25	A-B-C-N-O	A-B-C-N-O	A-B-C-N-O	A-C-N-O	A-C-N-O	
9.26	A-B-C-N-O	A-B-C-N-O	A-B-C-N-O	A-C-N-O	A-C-N-O	
9.27	A-B-C-N-O	A-B-C-N-O	A-B-C-N-O	A-C-N-O	A-C-N-O	
9.28	A-B-C-N-O	A-B-C-N-O	A-B-C-N-O	A-C-N-O	A-C-N-O	
9.30	A-B-C-N	A-B-C-N	A-B-C-N	A-C-N	A-C-N	
9.40	A-B-C-V	A-B-C-V	A-B-C-V	A-C-V	A-C-V	
9.41	A-B-C-F-G-N	A-B-C-F-G-N	A-B-C-F-G-N	A-C-U	A-C-U	
9.42	A-B-C-N-S	A-B-C-N-S	A-B-C-N-S	A-C-S-T	A-C-S-T	
10.01	A-B-G-S-Q	A-B-G-S-Q	A-B-G-S-Q			
10.02	A-B-G-S-Q	A-B-G-S-Q	A-B-G-S-Q			
10.10	A-B-G-S-Q	A-B-G-S-Q	A-B-G-S-Q			
10.11	A-B-G-S-Q	A-B-G-S-Q	A-B-G-S-Q			
10.12	A-B-G-S-Q	A-B-G-S-Q	A-B-G-S-Q			
10.13	A-B-G-S-Q	A-B-G-S-Q	A-B-G-S-Q			
10.14	A-B-G-S-Q	A-B-G-S-Q	A-B-G-S-Q			

# TABELLA MODELLI - ACCESSORI

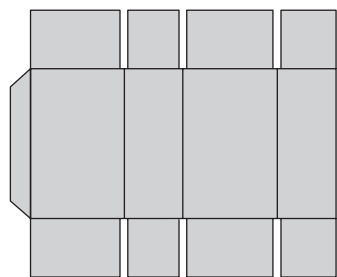
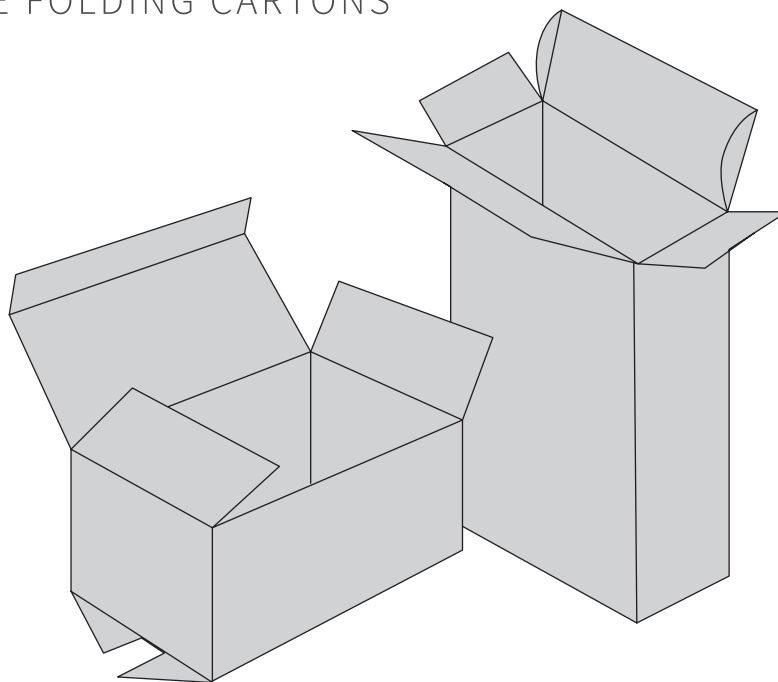
## MODELS - ACCESSORIES CHART

TIPI DI SCATOLE BOXES TYPE	VEGA AQUILA 62 82 102	VEGA FRECCIA 60	VEGA POLARIS 90 110	VEGA RIGEL 145 170	VEGA ALTAIR 170 200 240 290	VEGA ADF 170 200 240 290
	10.15	A-B-G-S-Q	A-B-G-S-Q	A-B-G-S-Q		
10.16	A-B-G-S-Q	A-B-G-S-Q	A-B-G-S-Q			
10.17	A-B-G-S-Q	A-B-G-S-Q	A-B-G-S-Q			
10.18	A-B-G-S-Q	A-B-G-S-Q	A-B-G-S-Q			
10.19	A-B-G-S-Q	A-B-G-S-Q	A-B-G-S-Q			
10.20	A-B-G-S-Q	A-B-G-S-Q	A-B-G-S-Q			
10.21	A-C	A-C	A-C	A-C	A-C	
10.22	A-C	A-C	A-C	A-C	A-C	
10.23	A-B-G-S-Q	A-B-G-S-Q	A-B-G-S-Q			
10.24	A-B-G-S-Q	A-B-G-S-Q	A-B-G-S-Q			
10.25	A-B-G-S-Q	A-B-G-S-Q	A-B-G-S-Q			
10.26	A-C-S	A-C-S	A-C-S			
10.27	A-B-C-P	A-B-C-P	A-B-C-P			
10.28	A-B-C-P	A-B-C-P	A-B-C-P			
10.29	A-B-C-D-R	A-B-C-D-R	A-B-C-D-R	A-C	A-C	

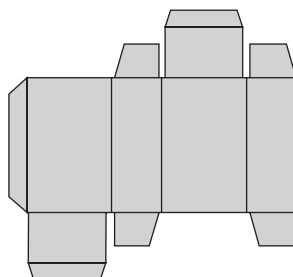
TIPI DI SCATOLE BOXES TYPE	VEGA AQUILA 62 82 102	VEGA FRECCIA 60	VEGA POLARIS 90 110	VEGA RIGEL 145 170	VEGA ALTAIR 170 200 240 290	VEGA ADF 170 200 240 290
	10.30	A-B-C-R	A-B-C-R	A-B-C-R	A-C	A-C
10.31	A-B-C-R	A-B-C-R	A-B-C-R	A-C	A-C	
10.32						A-Q
10.33						A-Q
10.34						A-Q
10.35						A-Q-S
10.36						A-Q-S
10.37						A-Q-S
10.38						A-Q-S
10.41	A-B-C-P-N-S	A-B-C-P-N-S	A-B-C-P-N-S			
10.42	A-B-C-P-N-S	A-B-C-P-N-S	A-B-C-P-N-S			
10.43	A-B-N-Q-S	A-B-N-Q-S	A-B-N-Q-S			
10.44	A-B-Q	A-B-Q	A-B-Q	A-C	A-C	
10.45	A-B-H-N-Q-S	A-B-H-N-Q-S	A-B-H-N-Q-S			
10.46	A-B-C-N-O	A-B-C-N-O	A-B-C-N-O			

# 1

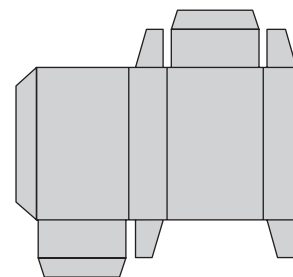
## SCATOLE PIEGHEVOLI CON INCOLLATURA LONGITUDINALE NORMALE STRAIGHT-LINE FOLDING CARTONS



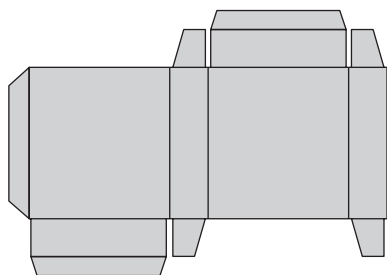
1.01



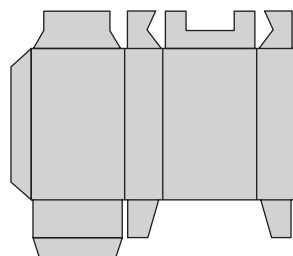
1.02



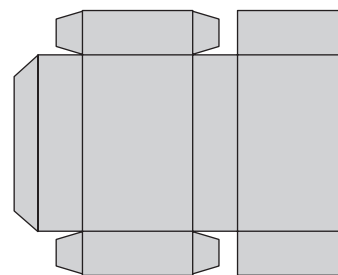
1.03



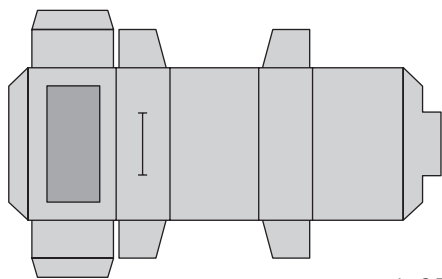
1.04



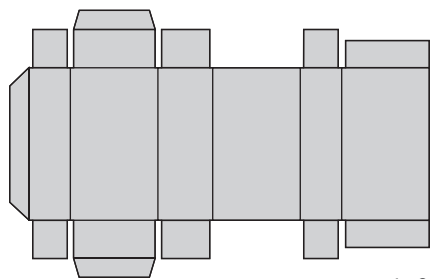
1.05



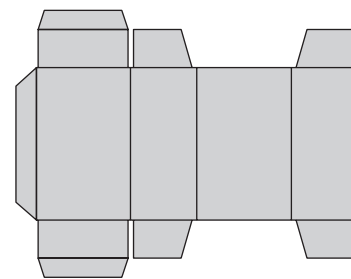
1.06



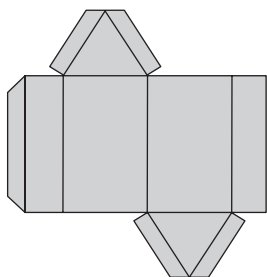
1.07



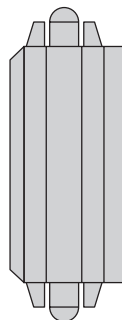
1.08



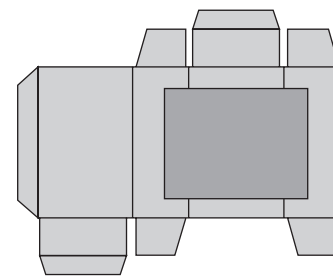
1.09



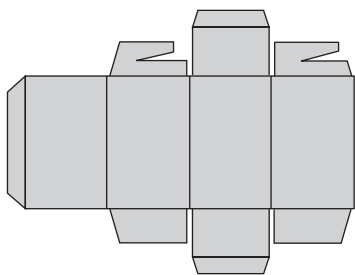
1.10



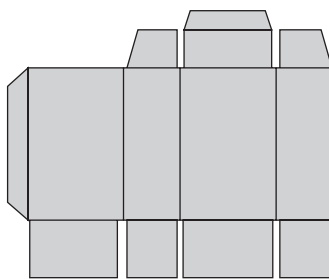
1.11



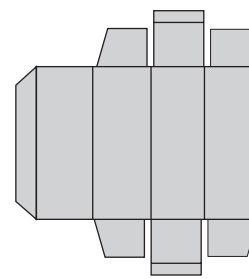
1.12



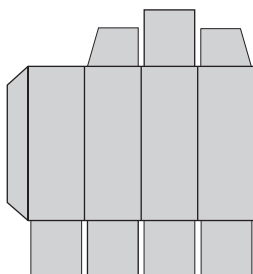
1.13



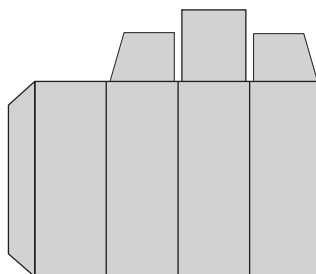
1.14



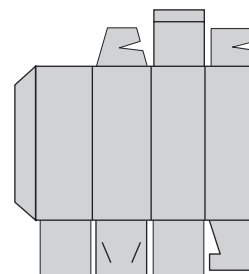
1.15



1.16



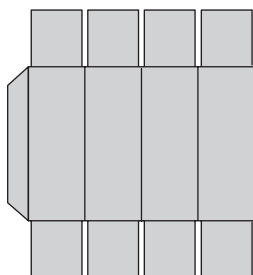
1.17



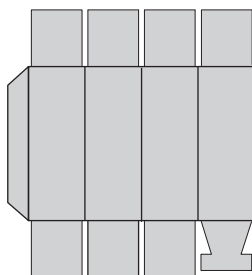
1.18

# 1

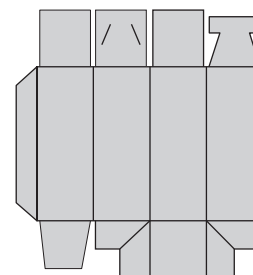
## SCATOLE PIEGHEVOLI CON INCOLLATURA LONGITUDINALE NORMALE STRAIGHT-LINE FOLDING CARTONS



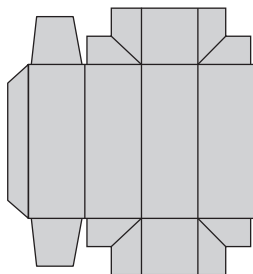
1.19



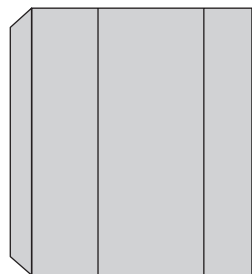
1.20



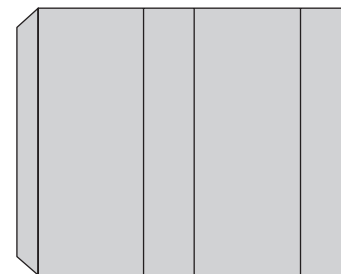
1.21



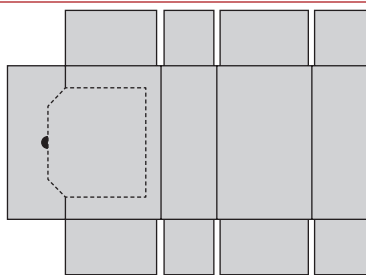
1.22



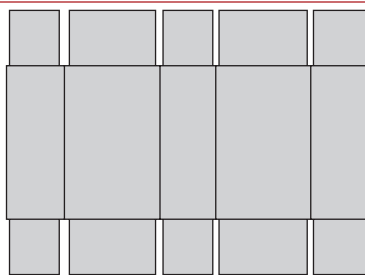
1.23



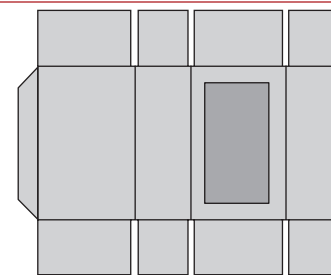
1.24



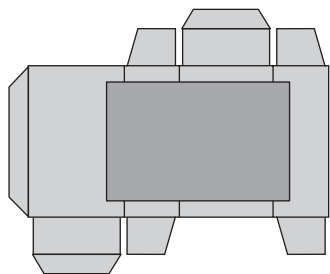
1.25



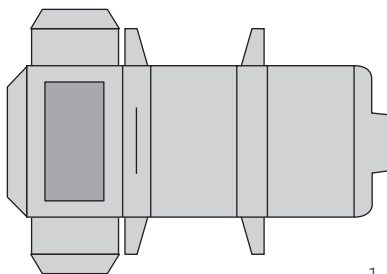
1.26



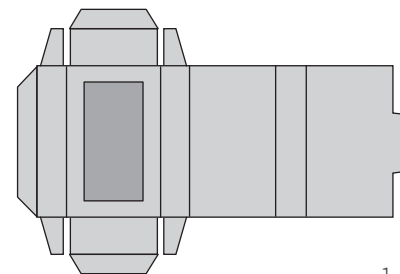
1.27



1.28

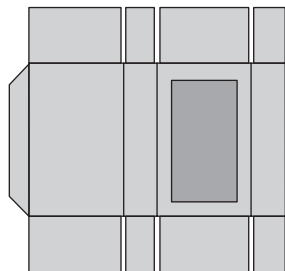


1.29

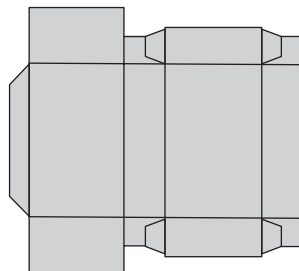


1.30

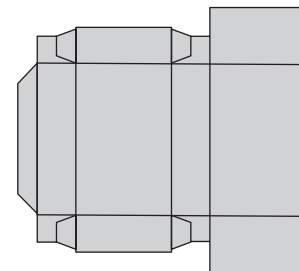




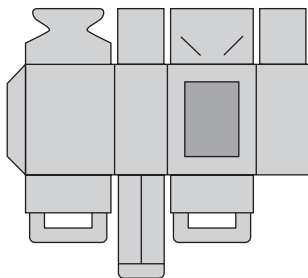
1.31



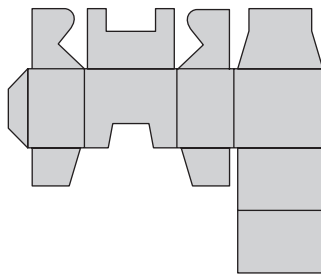
1.32



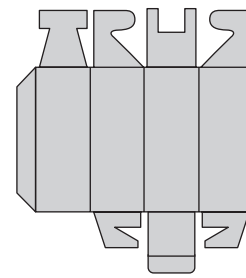
1.33



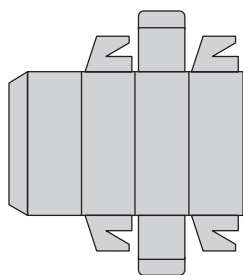
1.34



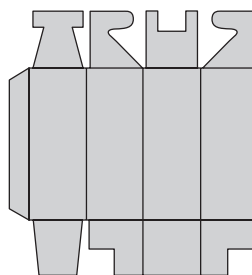
1.35



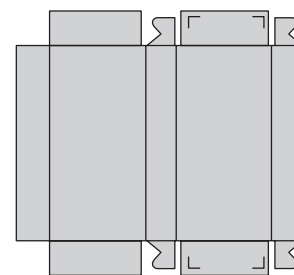
1.36



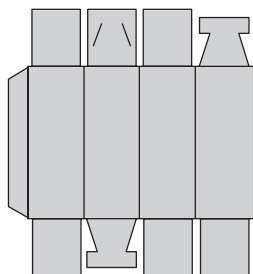
1.37



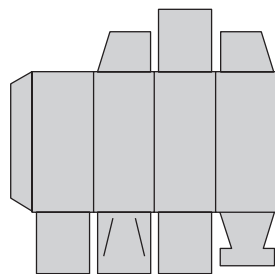
1.38



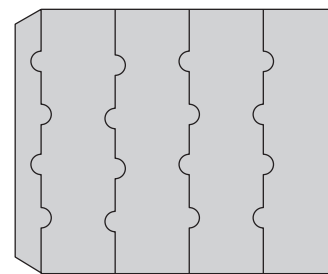
1.39



1.40



1.41

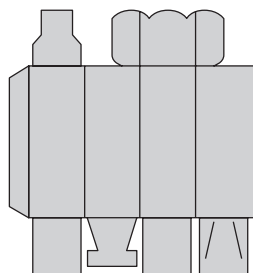


1.42

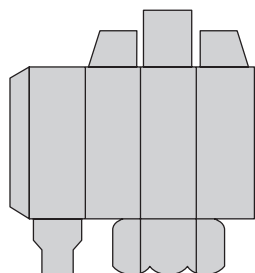
# 1

## SCATOLE PIEGHEVOLI CON INCOLLATURA LONGITUDINALE NORMALE

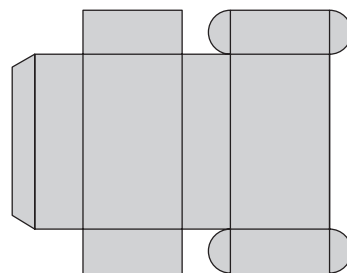
### STRAIGHT-LINE FOLDING CARTONS



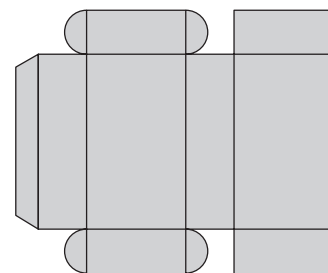
1.43



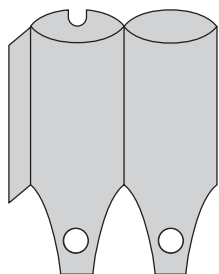
1.44



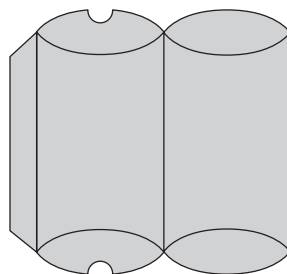
1.45



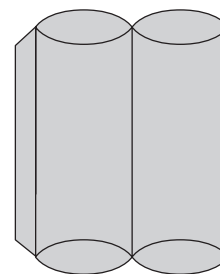
1.46



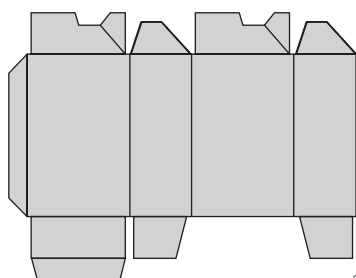
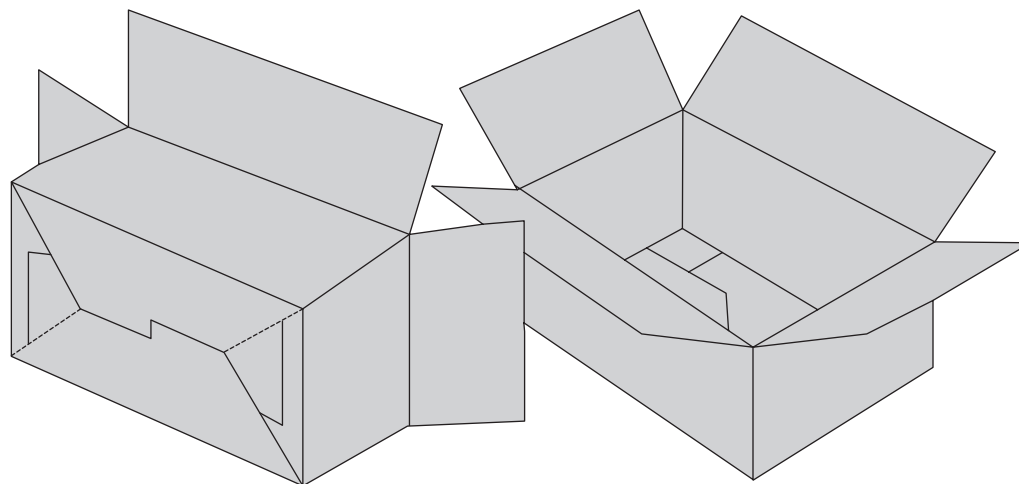
1.48



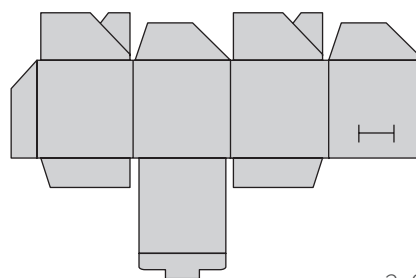
1.49



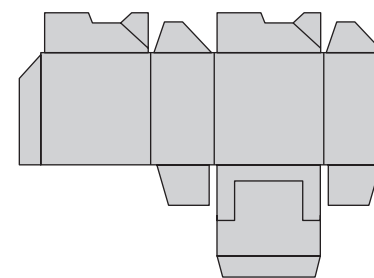
1.50



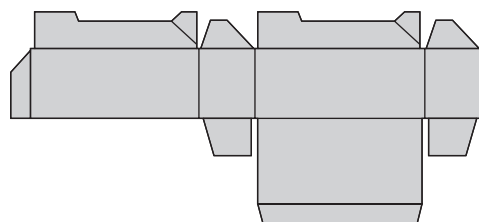
2.01



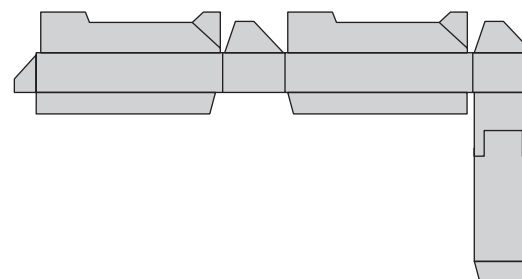
2.02



2.03



2.04

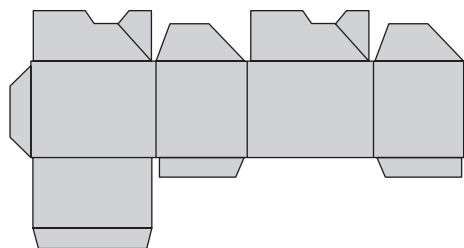


2.05

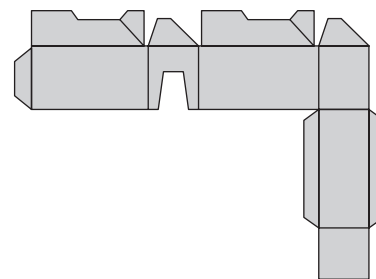
# 2

## SCATOLE CON FONDO A CHIUSURA AUTOMATICA

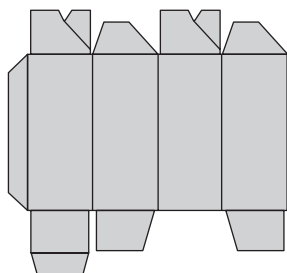
### CRASH LOCK BOTTOM CARTONS



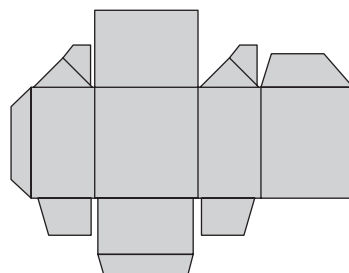
2.06



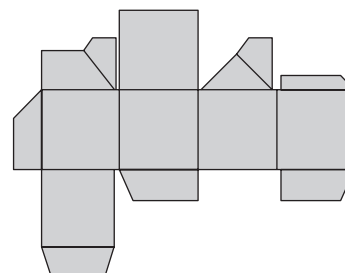
2.07



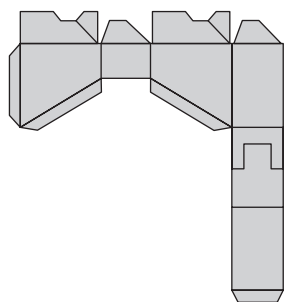
2.08



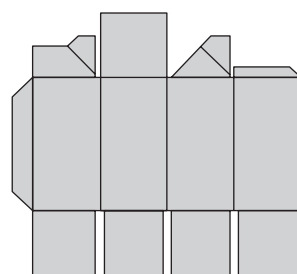
2.09



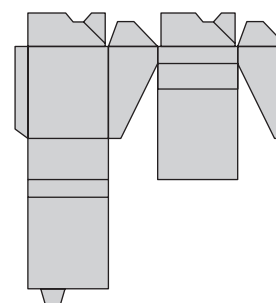
2.10



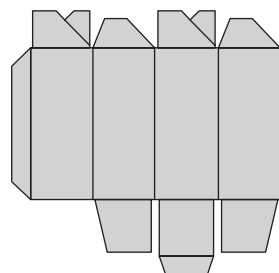
2.11



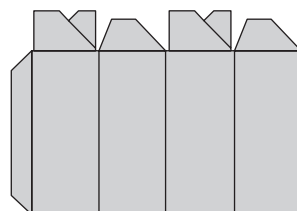
2.12



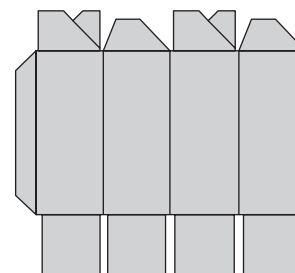
2.13



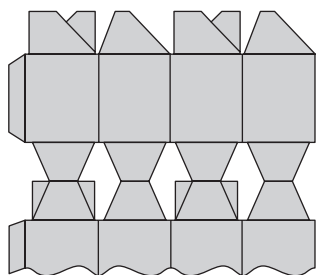
2.14



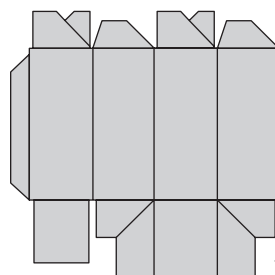
2.15



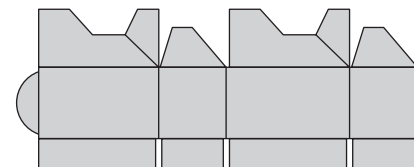
2.16



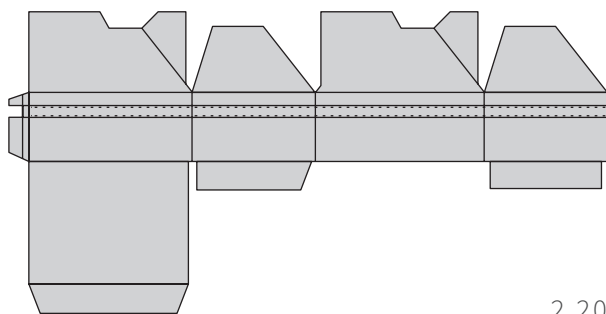
2.17



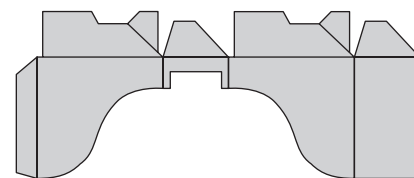
2.18



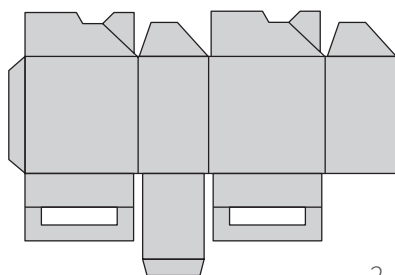
2.19



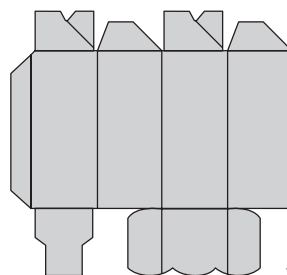
2.20



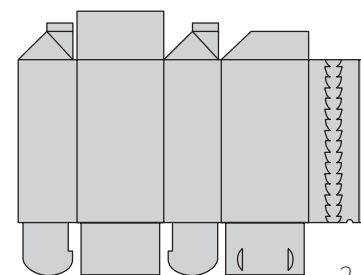
2.21



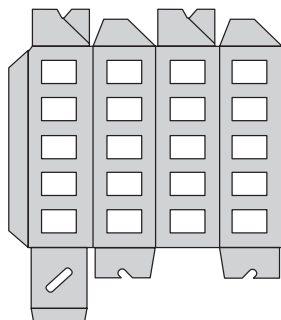
2.22



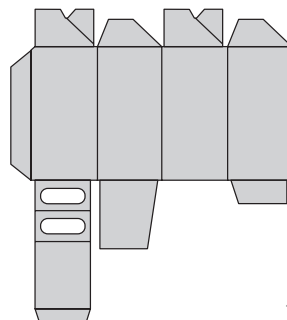
2.23



2.24



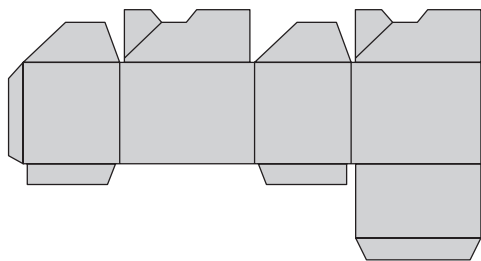
2.26



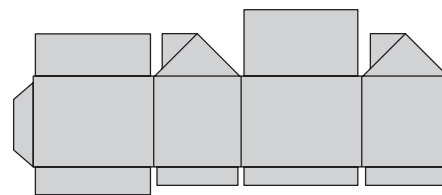
2.27

# 3 SCATOLE PIEGHEVOLI CON FONDO A CHIUSURA AUTOMATICA SPECIALE

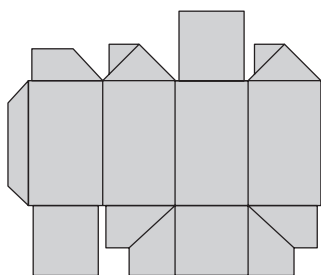
## SPECIAL LOCK BOTTOM CARTONS



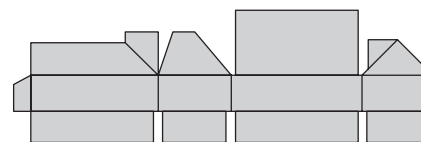
3.01



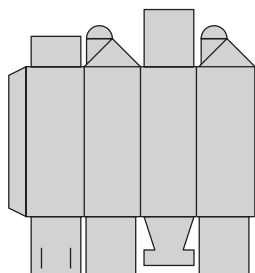
3.02



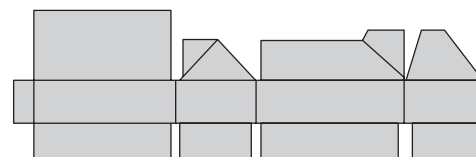
3.03



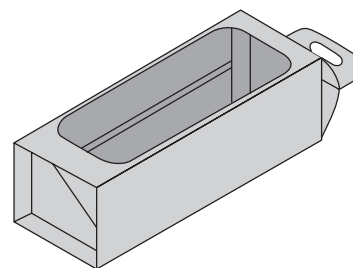
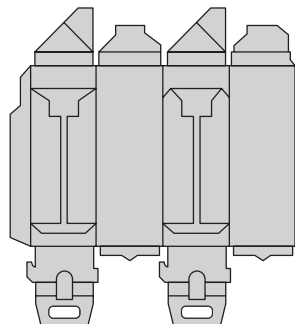
3.04



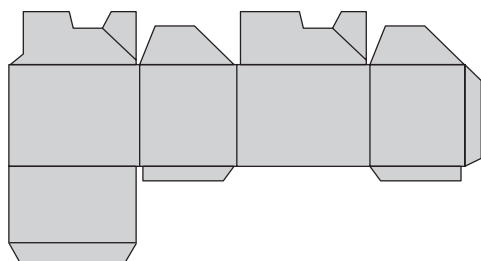
3.05



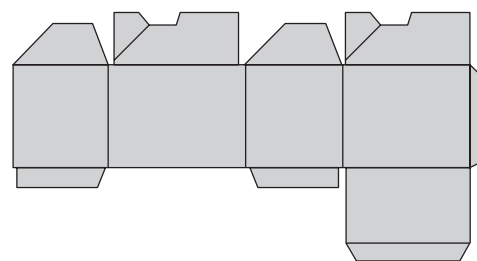
3.06



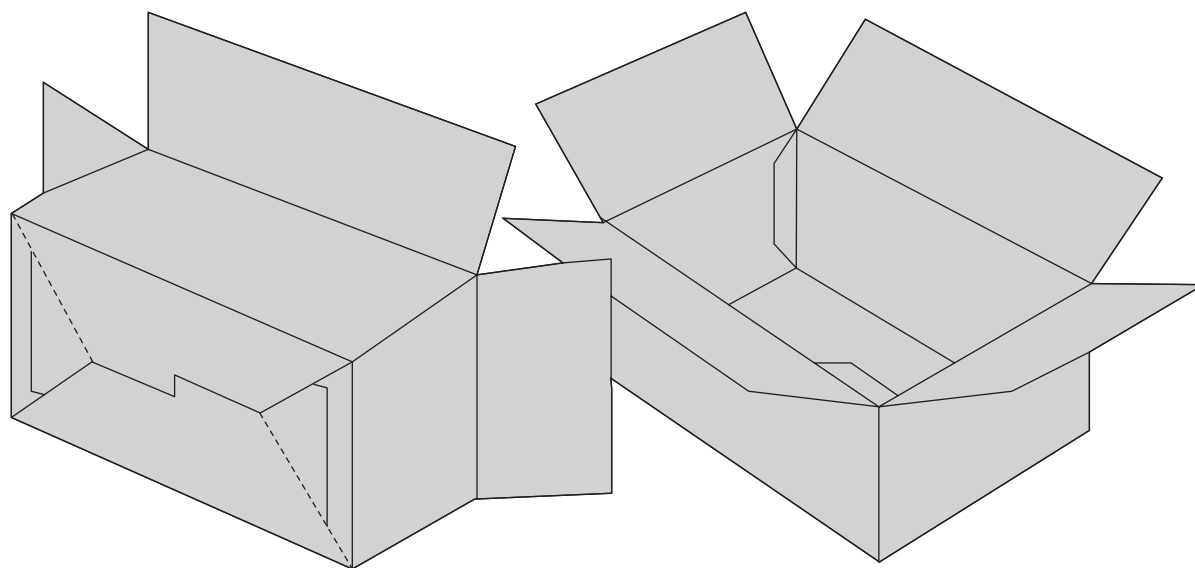
3.07



3.20



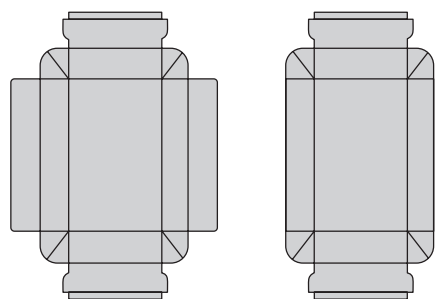
3.21



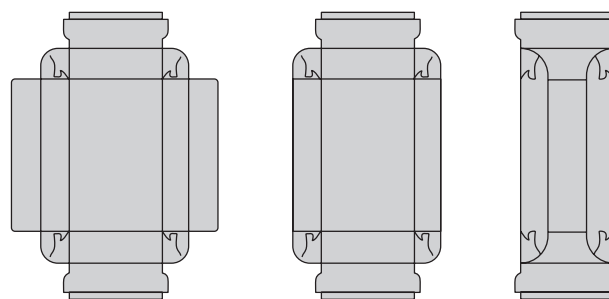
# 4

## SCATOLE CON PARETE SEMPLICE E DOPPIA PARETE

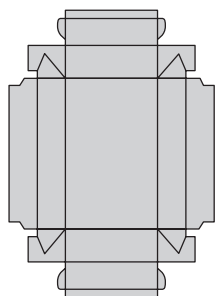
### DOUBLE WALL, COMPOUND-FOLD DOUBLE WALL CARTONS



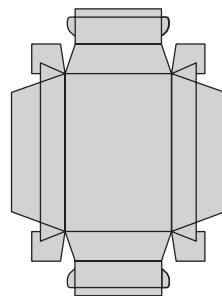
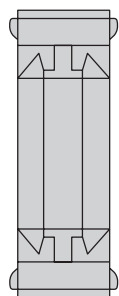
4.01



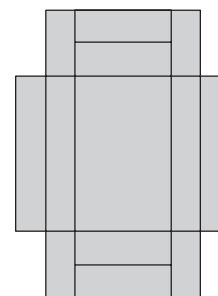
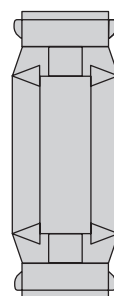
4.02



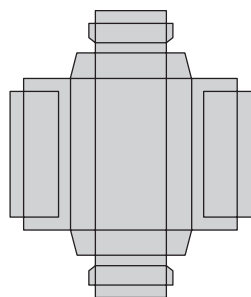
4.03



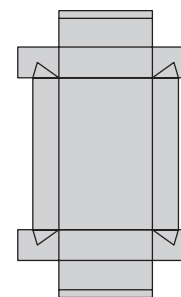
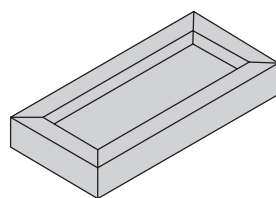
4.04



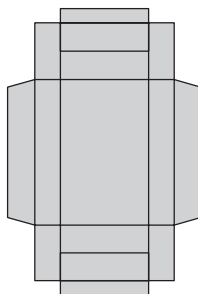
4.05



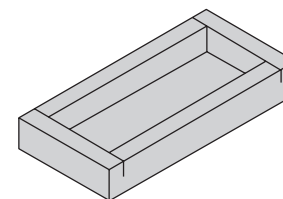
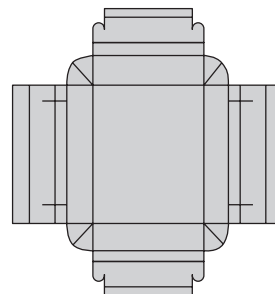
4.06



4.07



4.08

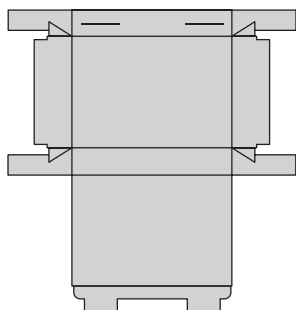


4.09

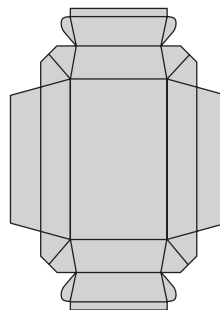


SCATOLE CON PARETE SEMPLICE E DOPPIA PARETE  
DOUBLE WALL, COMPOUND-FOLD DOUBLE WALL CARTONS

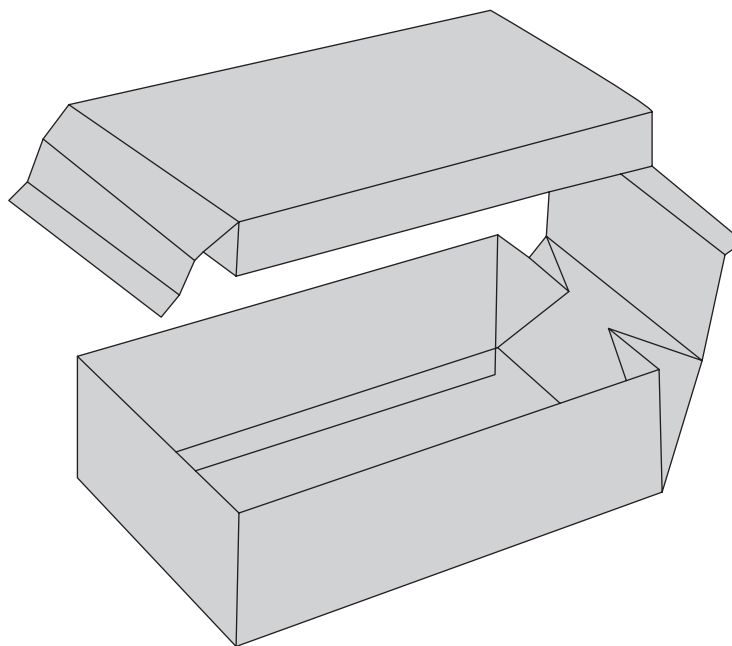
4



4.10



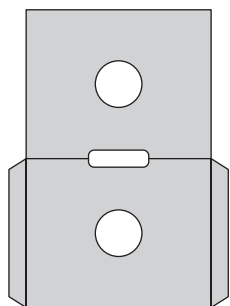
4.11



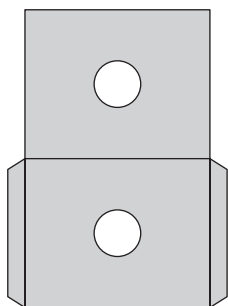
# 5

## BUSTE DA SPEDIZIONE E PER DISCHI

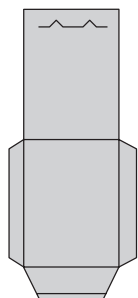
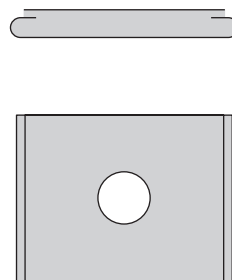
### MAILING ENVELOPES AND RECORD COVERS



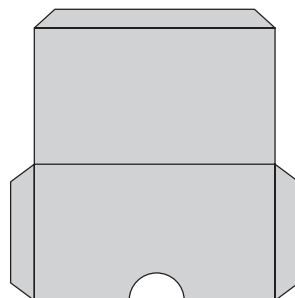
5.01



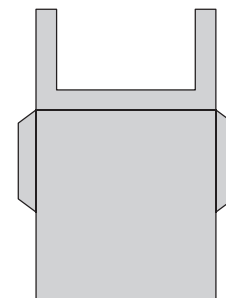
5.02



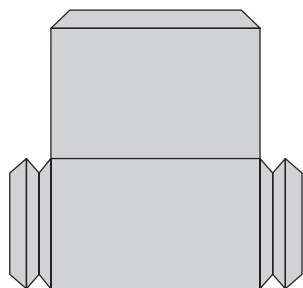
5.03



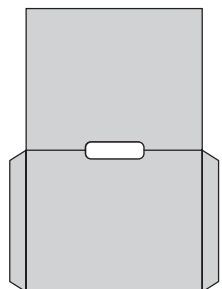
5.04



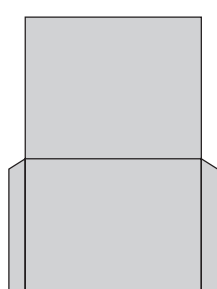
5.05



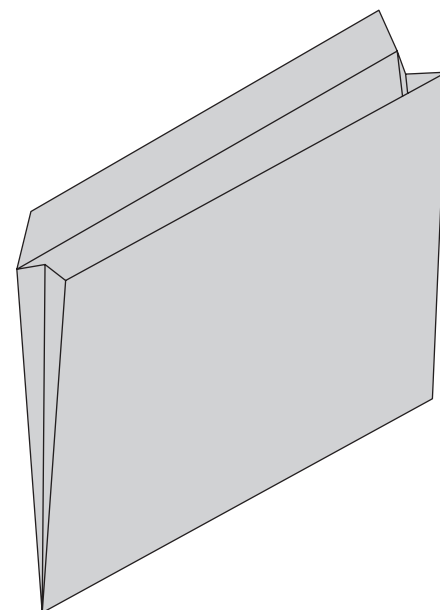
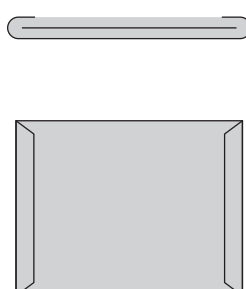
5.06



5.15

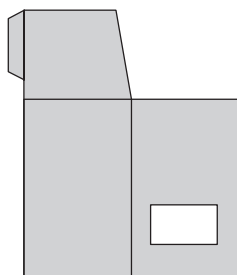


5.16

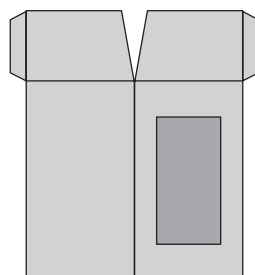


BUSTE DA SPEDIZIONE E PER DISCHI  
MAILING ENVELOPES AND RECORD COVERS

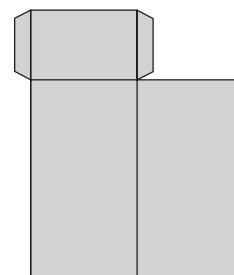
5



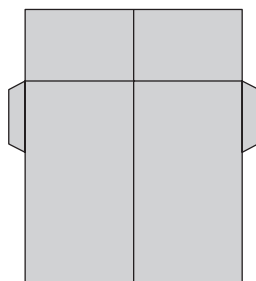
5.20



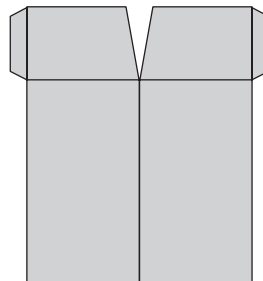
5.21



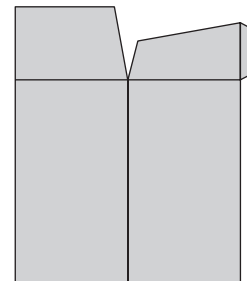
5.22



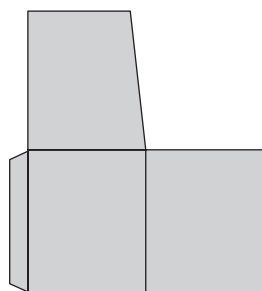
5.23



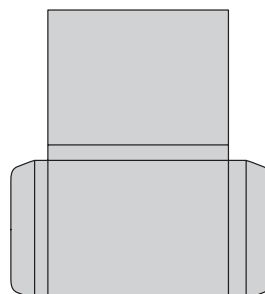
5.24



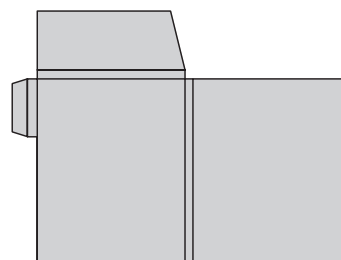
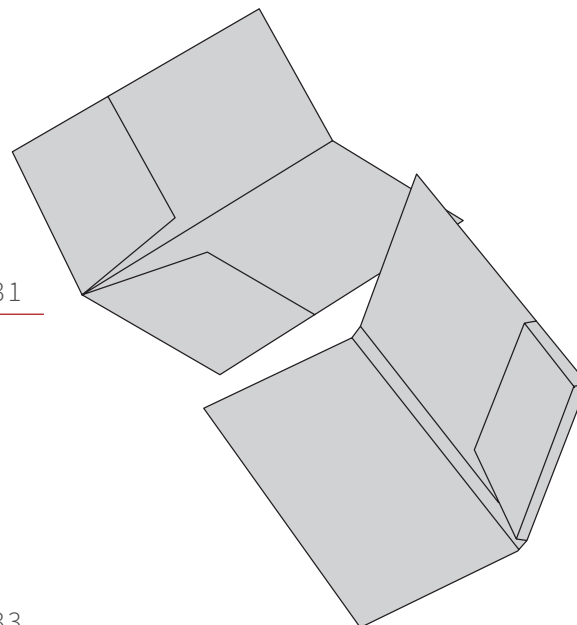
5.25



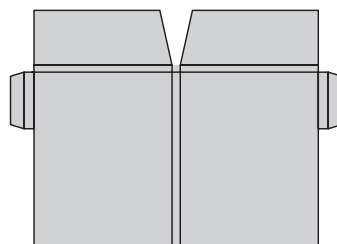
5.26



5.31

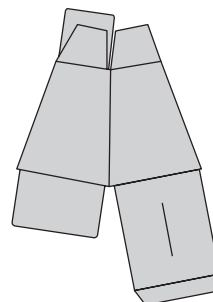
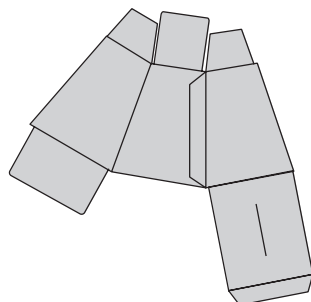
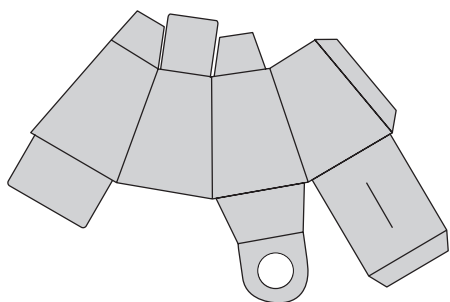


5.32

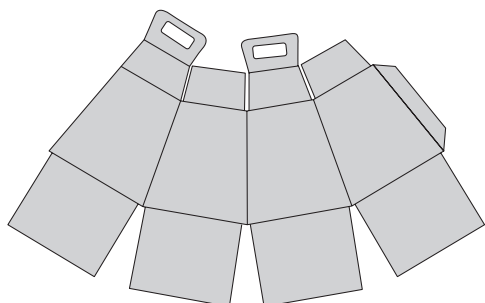


5.33

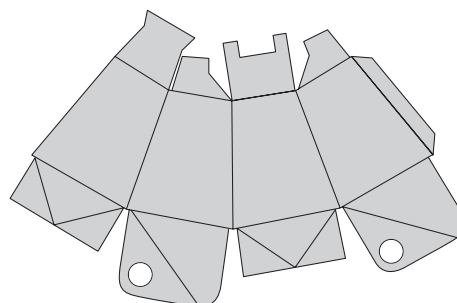
# 6 SCATOLE PIEGHEVOLI CONICHE TAPERED CARTONS



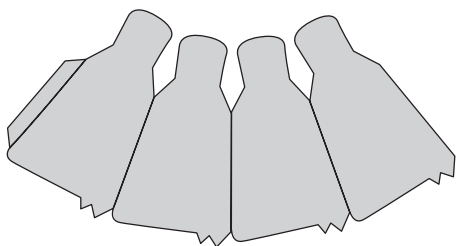
6.01



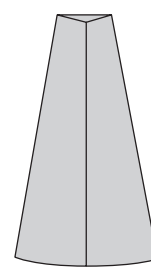
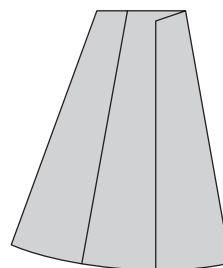
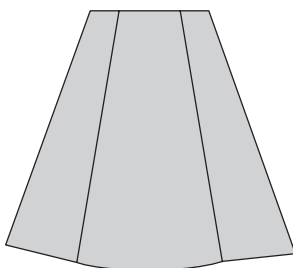
6.02



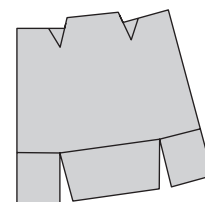
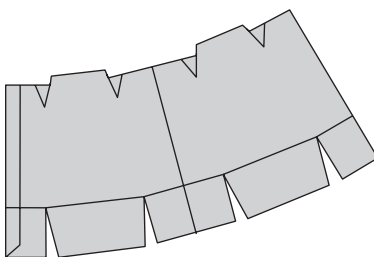
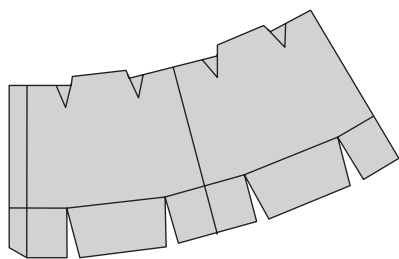
6.03



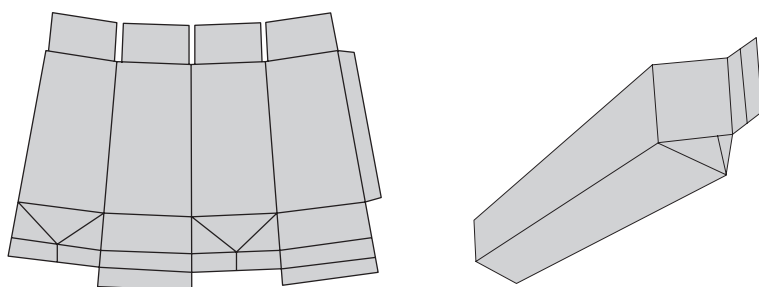
6.04



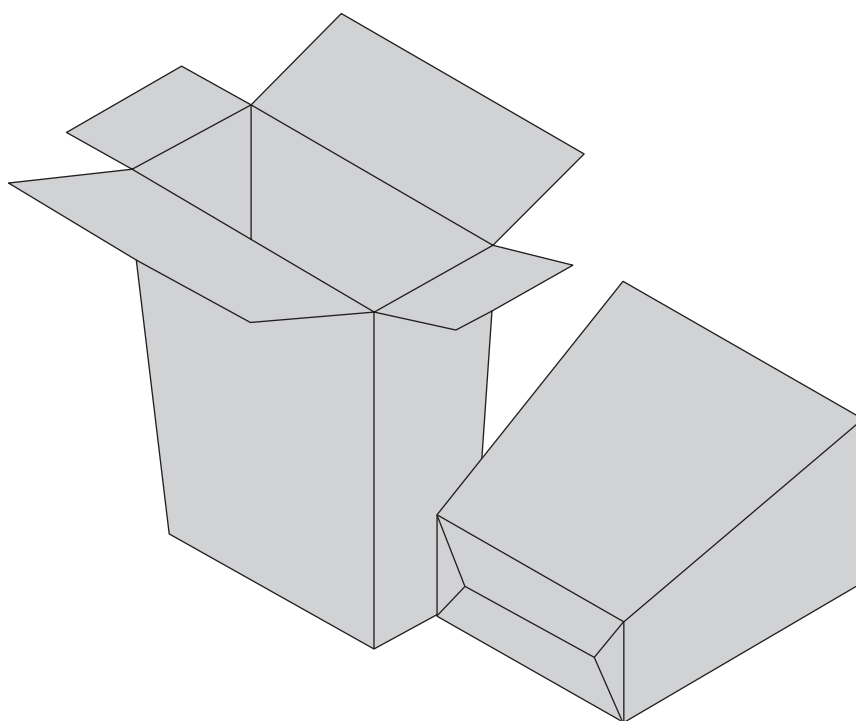
6.05



6.06

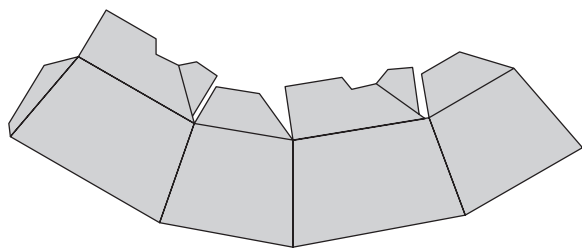


6.07

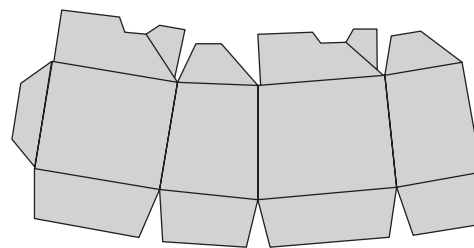


# 7 SCATOLE PIEGHEVOLI CONICHE CON FONDO A CHIUSURA AUTOMATICA

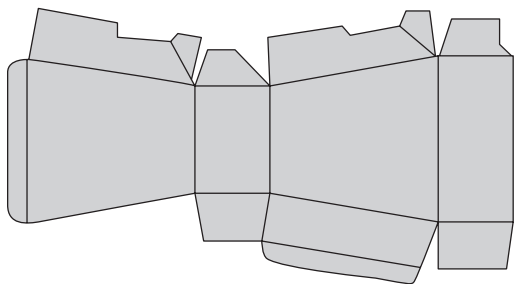
## TAPERED CARTONS WITH CRASH LOCK BOTTOM



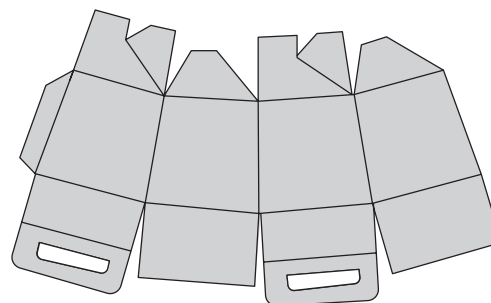
7.01



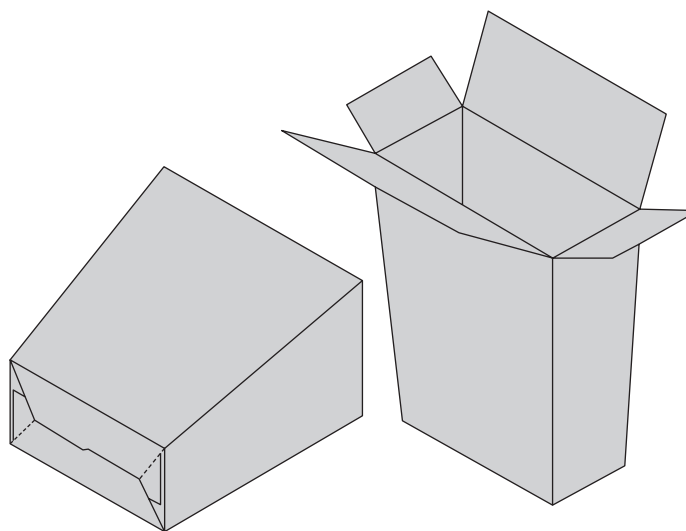
7.02



7.03

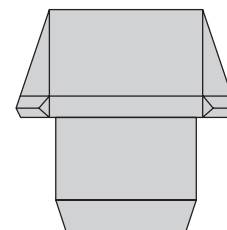
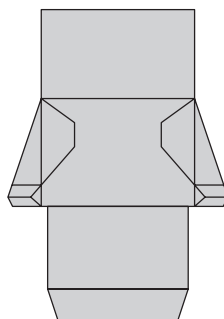
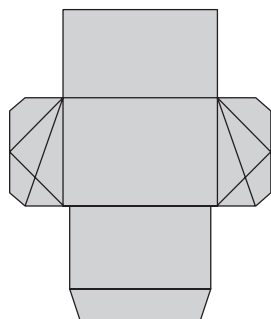


7.04

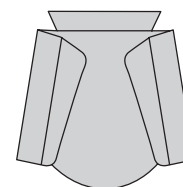
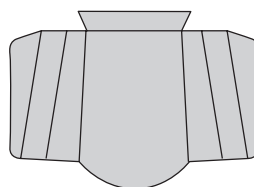
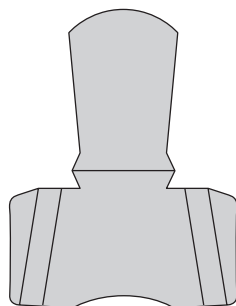


SCATOLE PIEGHEVOLI CONICHE SPECIALI, INVIO CAMPIONI INDISPENSABILE  
CONICAL CASES (FRENCH FRIES) PLEASE SUBMIT SAMPLES

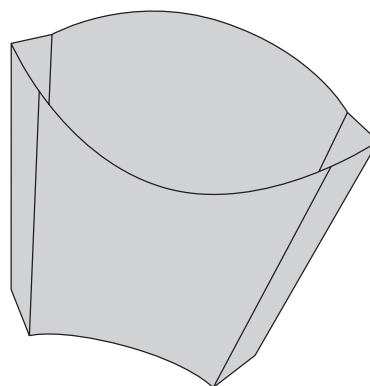
8



8.01



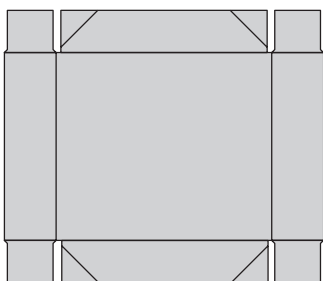
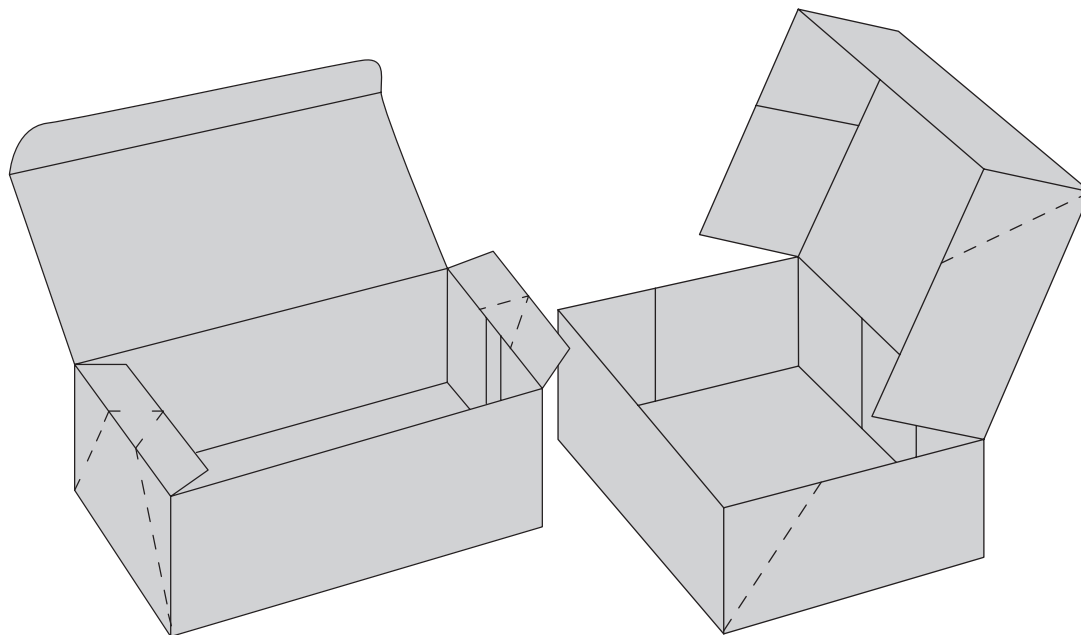
8.02



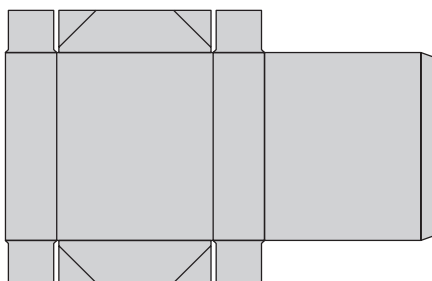
# 9

## SCATOLE A 4 OPPURE A 6 INCOLLATURE

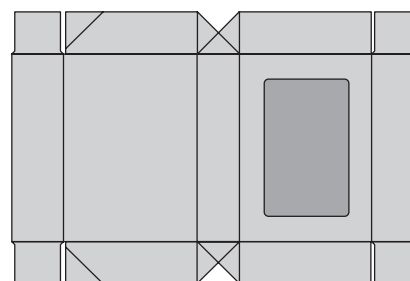
4 CORNERS WITH LID, 6 CORNERS COLLAPSIBLE BOX



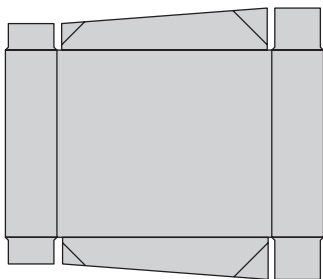
9.01



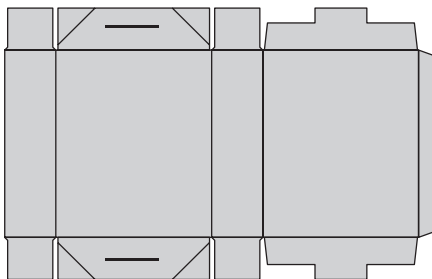
9.02



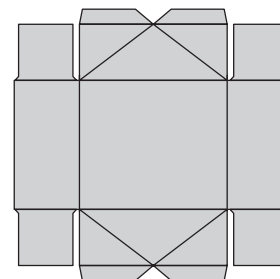
9.03



9.04



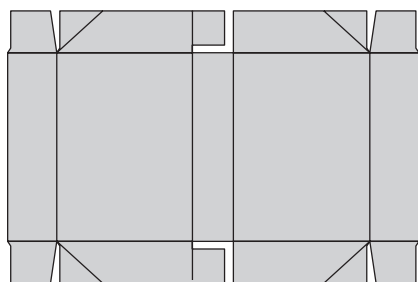
9.05



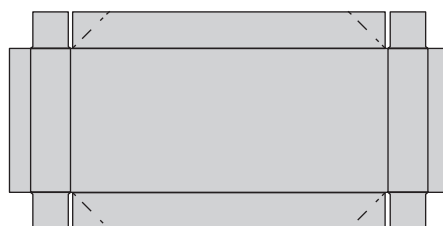
9.06



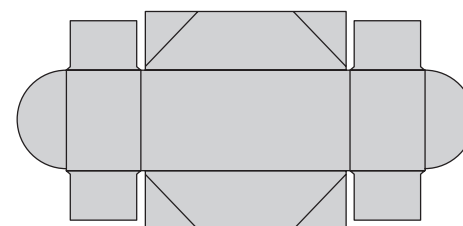
4 CORNERS WITH LID, 6 CORNERS COLLAPSIBLE BOX



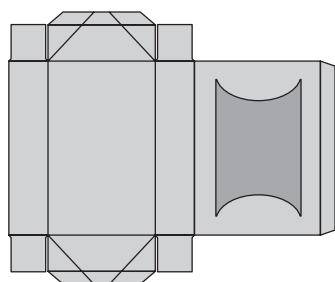
9.07



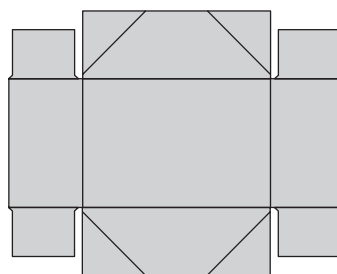
9.08



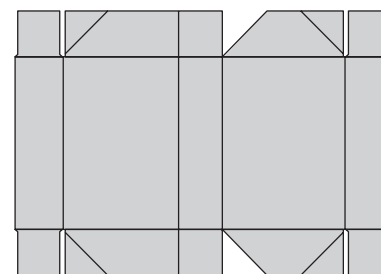
9.09



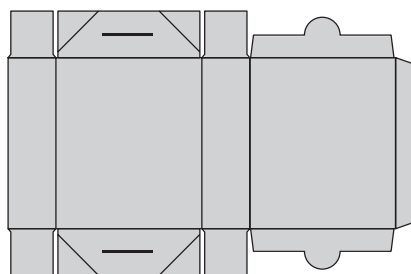
9.10



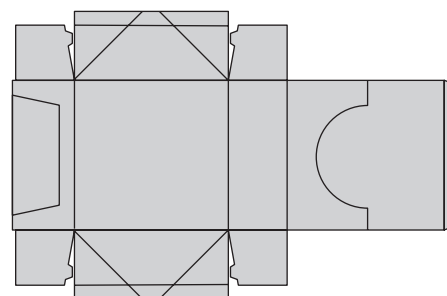
9.11



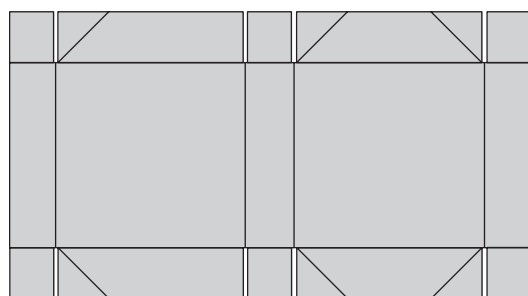
9.12



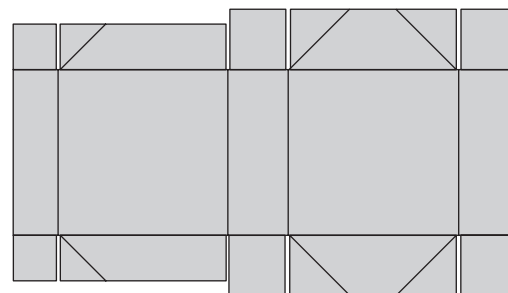
9.13



9.14



9.20

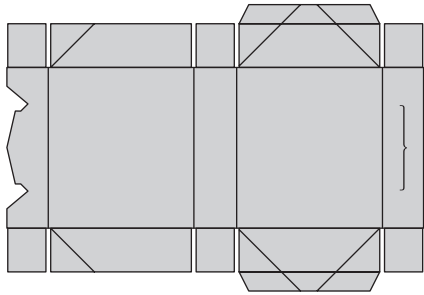


9.21

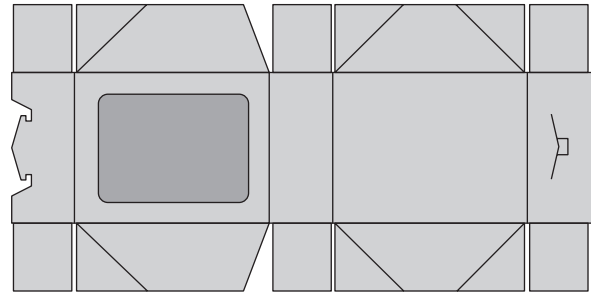
# 9

## SCATOLE A 4 OPPURE A 6 INCOLLATURE

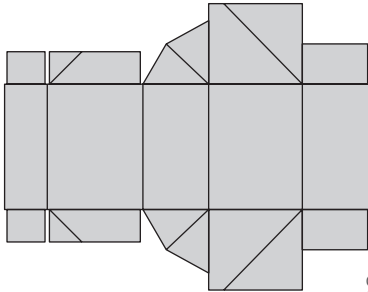
4 CORNERS WITH LID, 6 CORNERS COLLAPSIBLE BOX



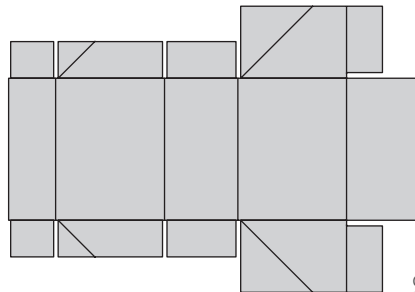
9.22



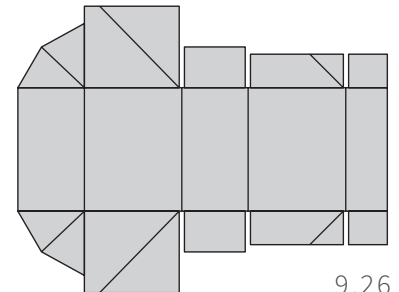
9.23



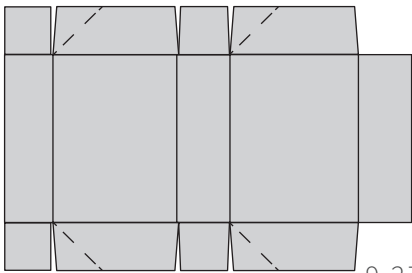
9.24



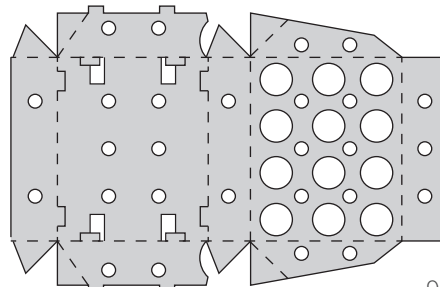
9.25



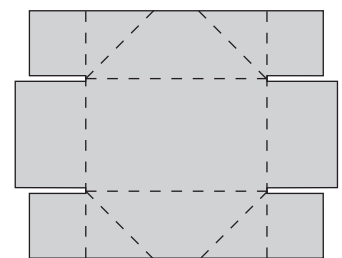
9.26



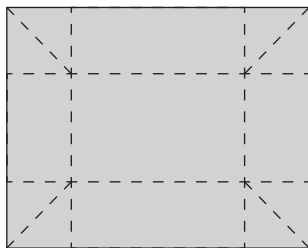
9.27



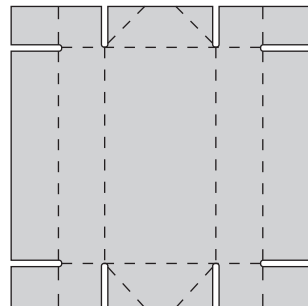
9.28



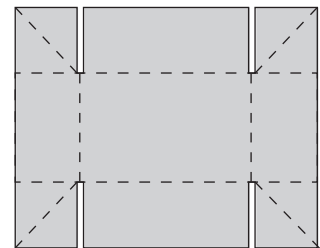
9.30



9.40



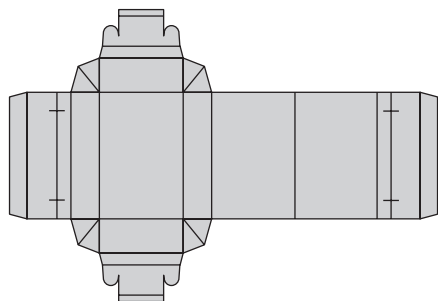
9.41



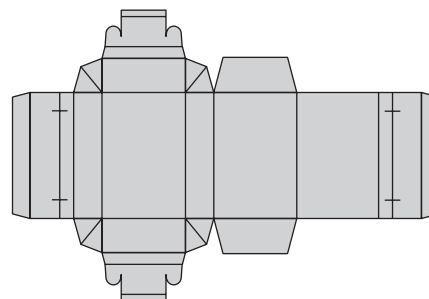
9.42

SCATOLE SPECIALI, INVIO CAMPIONI INDISPENSABILE  
SPECIAL CARTONS, PLEASE SUBMIT SAMPLES

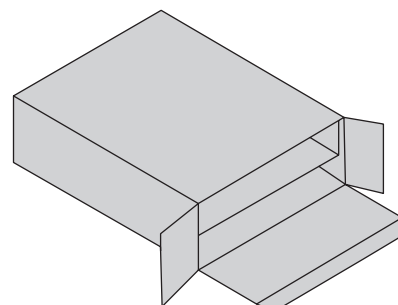
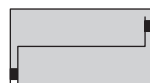
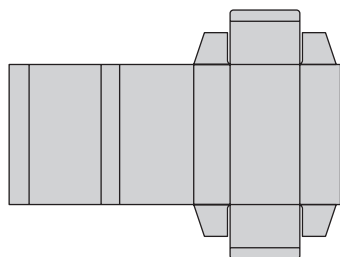
10



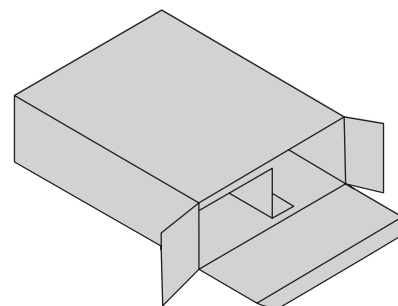
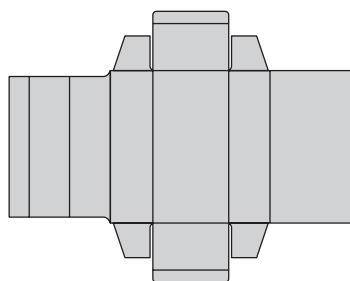
10.01



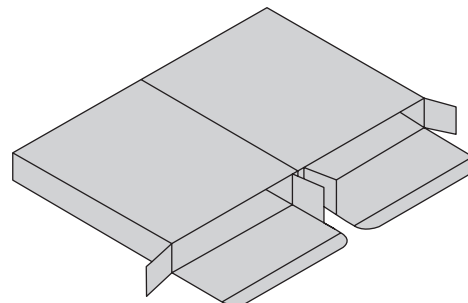
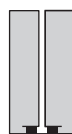
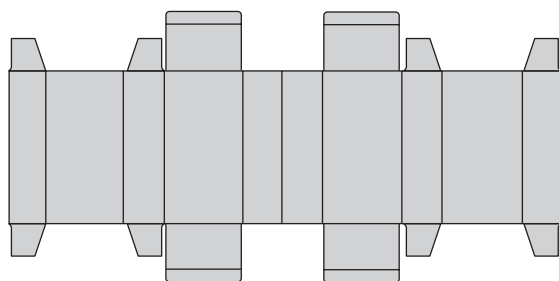
10.02



10.10



10.11

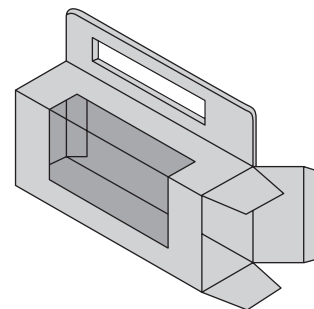
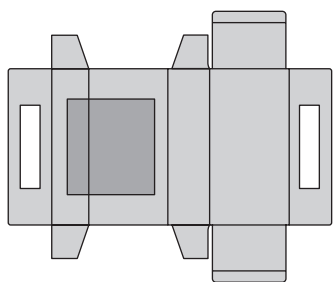


10.12

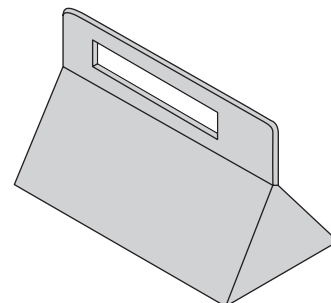
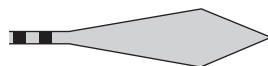
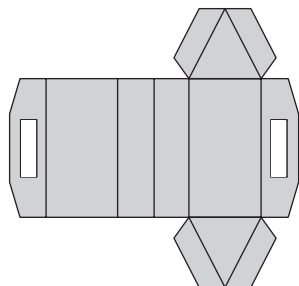
# 10

SCATOLE SPECIALI, INVIO CAMPIONI INDISPENSABILE

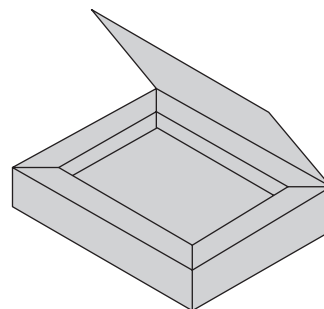
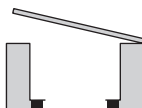
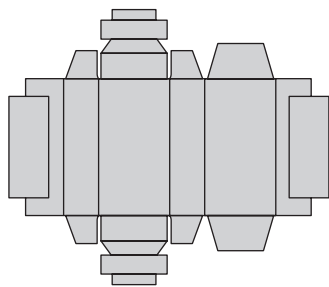
SPECIAL CARTONS, PLEASE SUBMIT SAMPLES



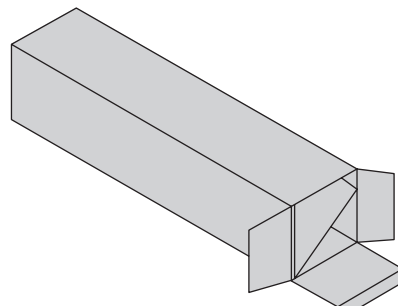
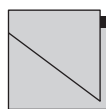
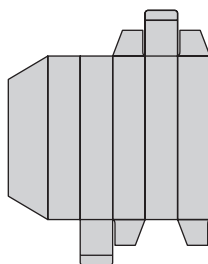
10.13



10.14



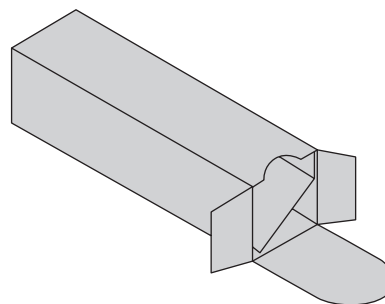
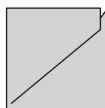
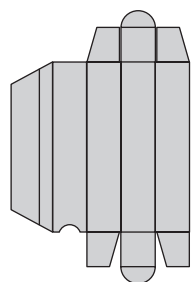
10.15



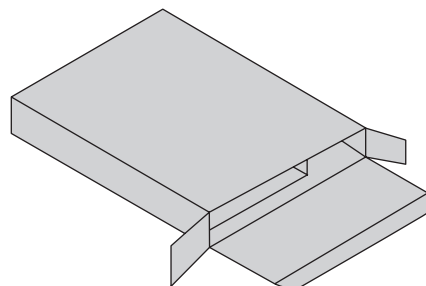
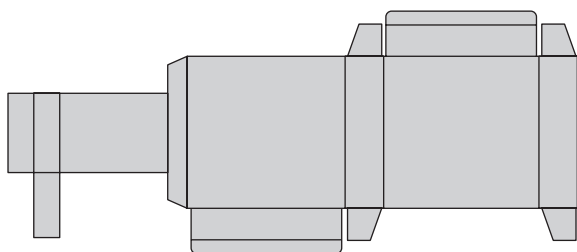
10.16

SCATOLE SPECIALI, INVIO CAMPIONI INDISPENSABILE  
SPECIAL CARTONS, PLEASE SUBMIT SAMPLES

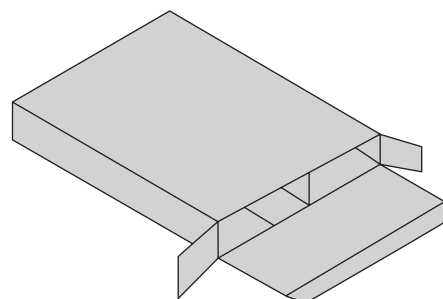
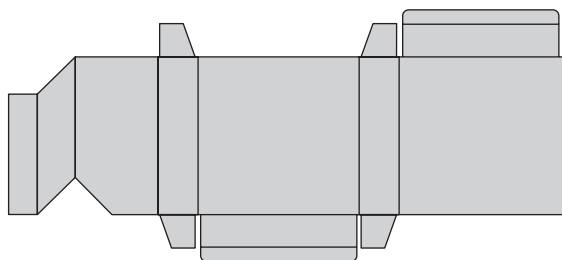
10



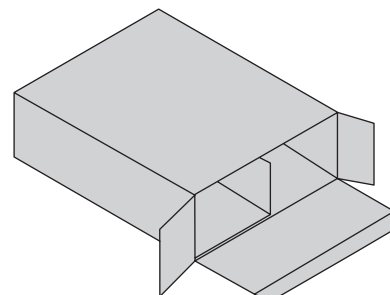
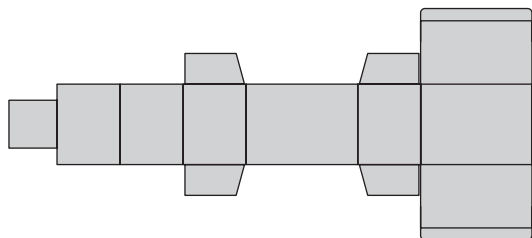
10.17



10.18



10.19

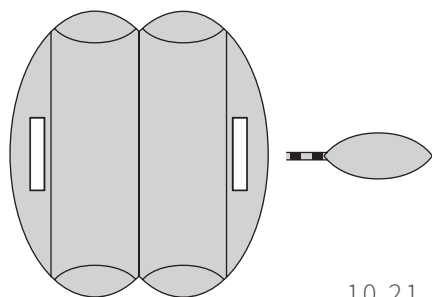


10.20

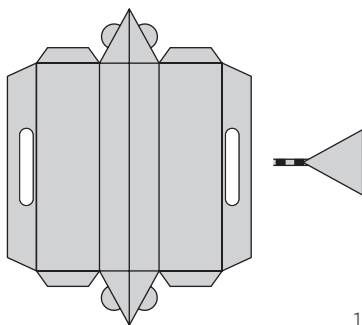
# 10

SCATOLE SPECIALI, INVIO CAMPIONI INDISPENSABILE

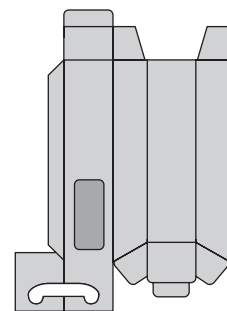
SPECIAL CARTONS, PLEASE SUBMIT SAMPLES



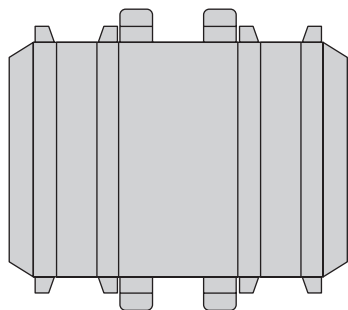
10.21



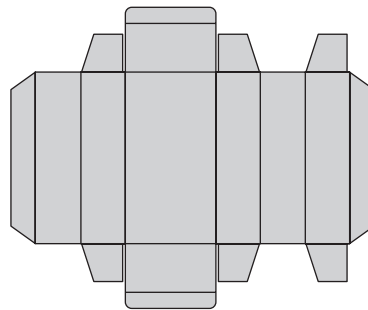
10.22



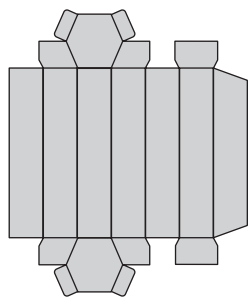
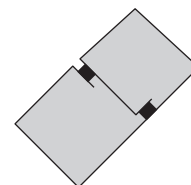
10.23



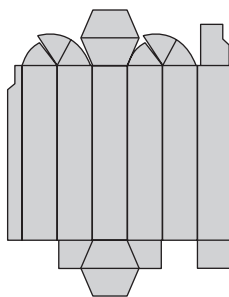
10.24



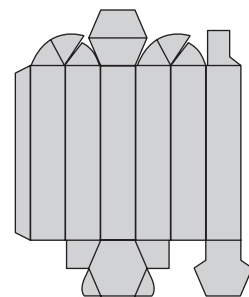
10.25



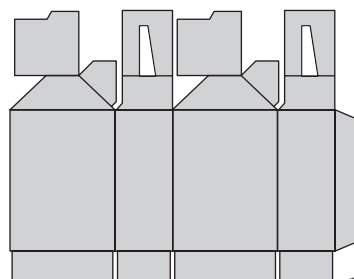
10.26



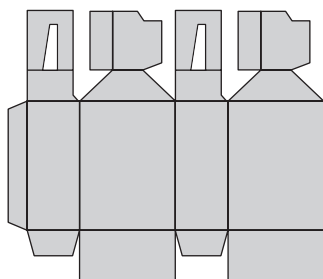
10.27



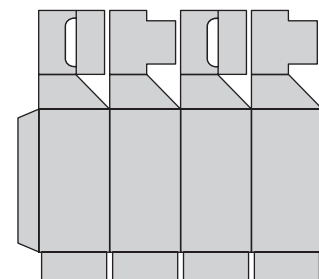
10.28



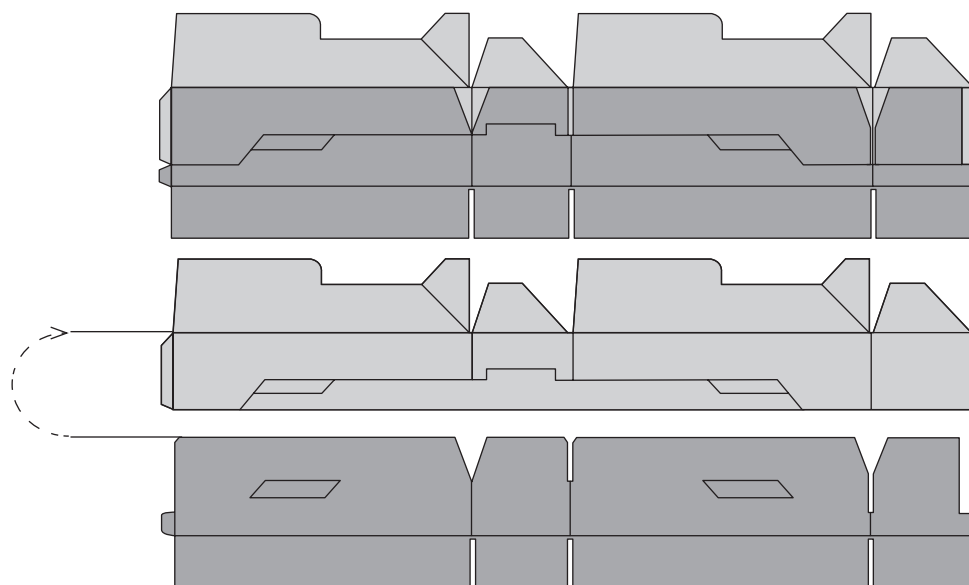
10.29



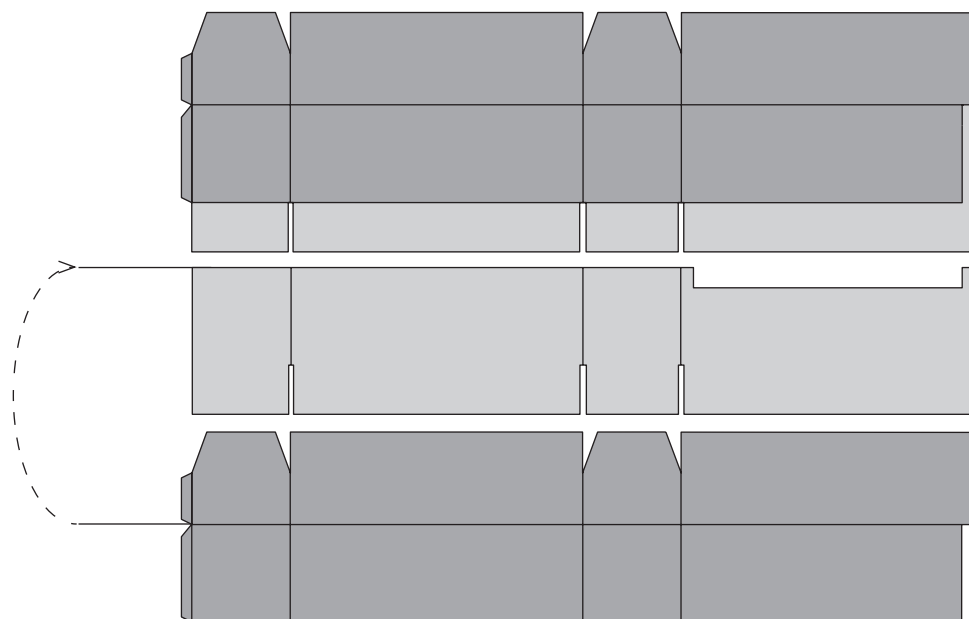
10.30



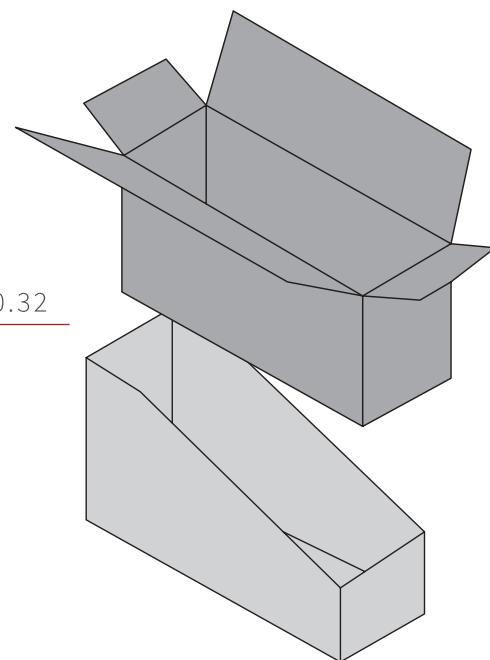
10.31



10.32



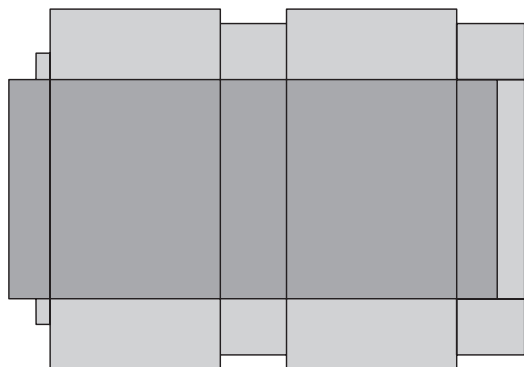
10.33



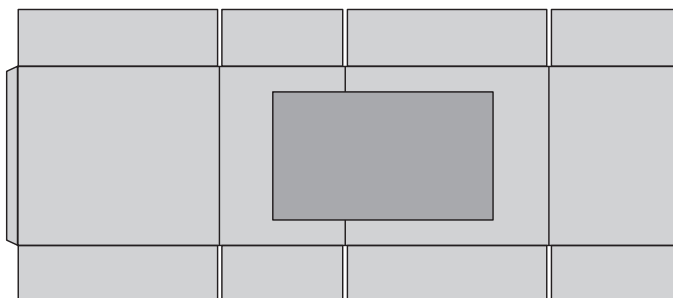
# 10

SCATOLE SPECIALI, INVIO CAMPIONI INDISPENSABILE

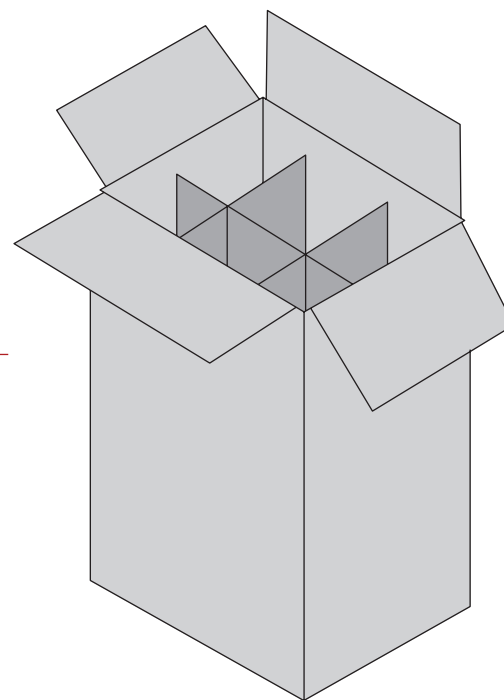
SPECIAL CARTONS, PLEASE SUBMIT SAMPLES



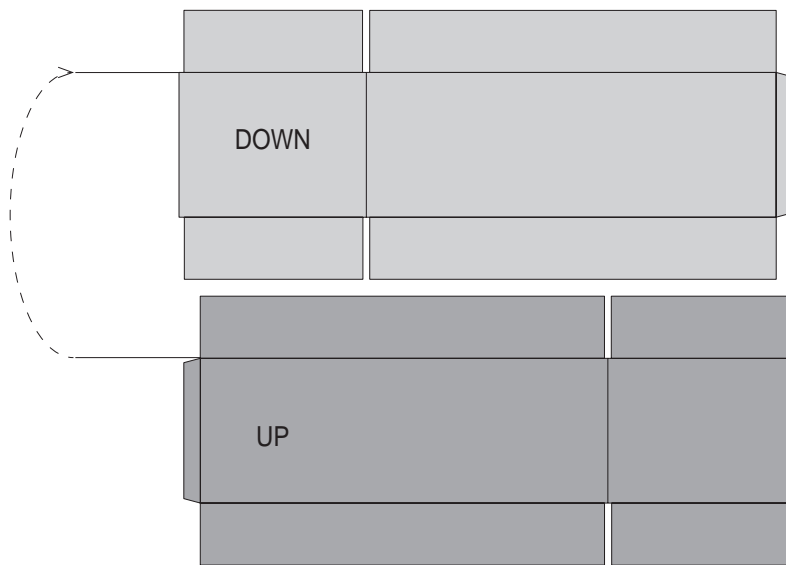
10.34



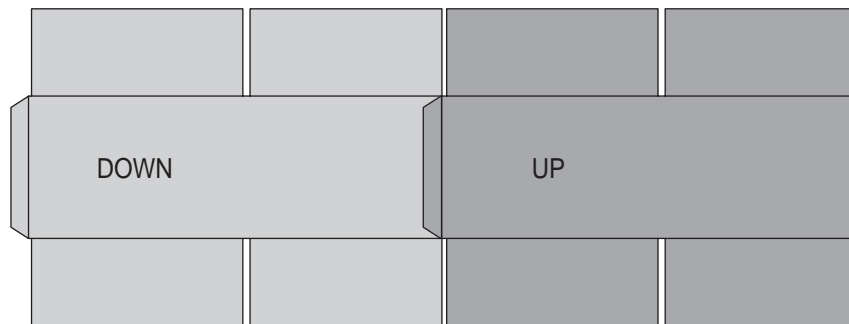
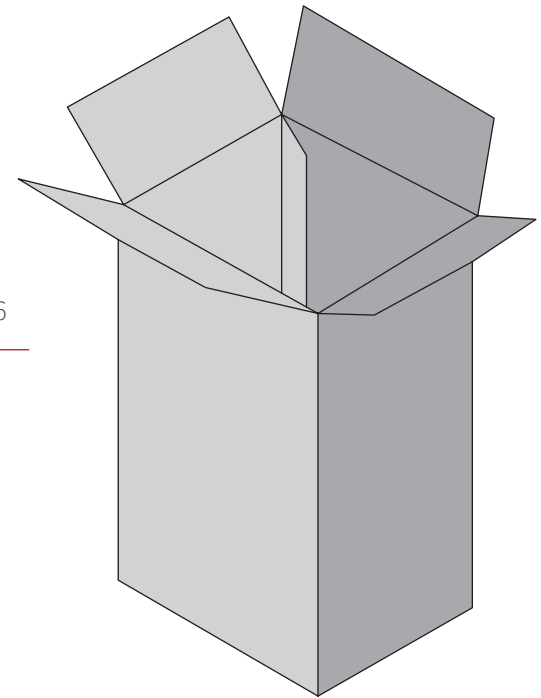
10.35



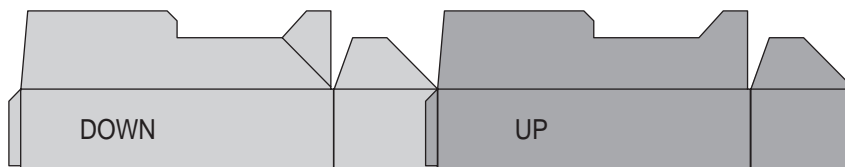




10.36



10.37

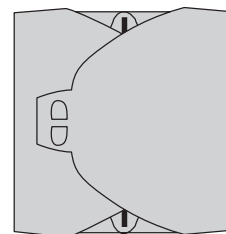
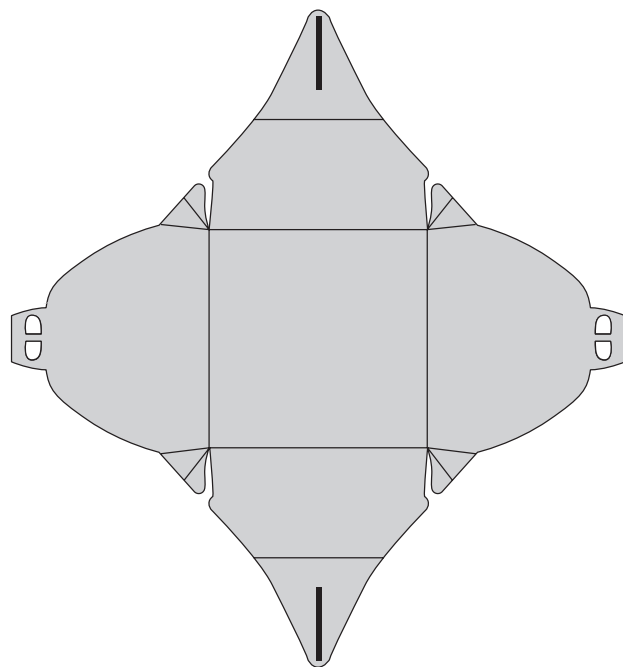


10.38

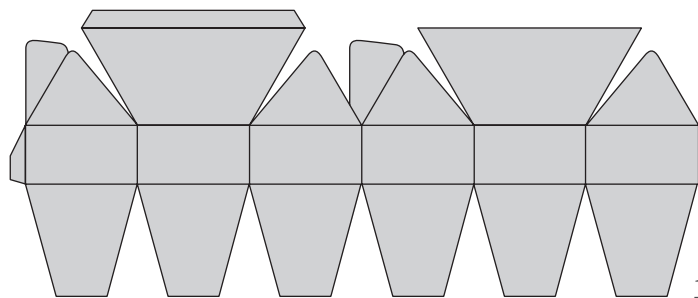
# 10

SCATOLE SPECIALI, INVIO CAMPIONI INDISPENSABILE

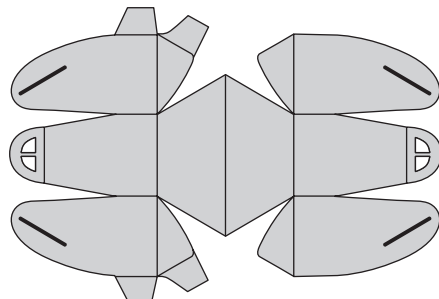
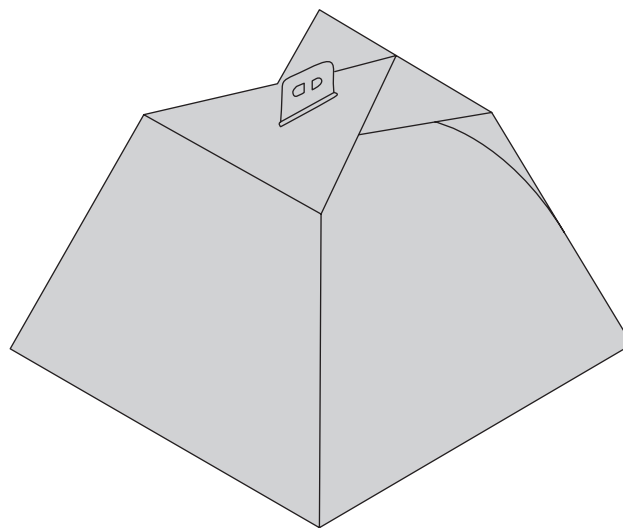
SPECIAL CARTONS, PLEASE SUBMIT SAMPLES



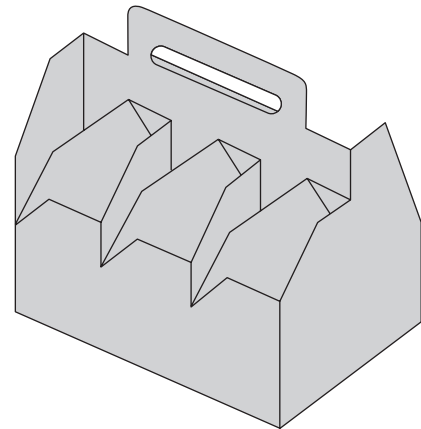
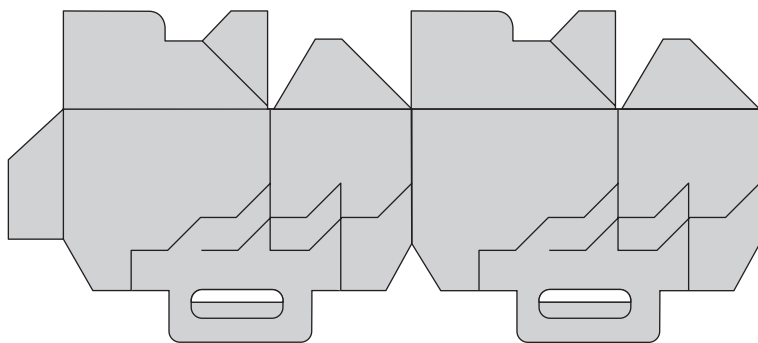
10.41



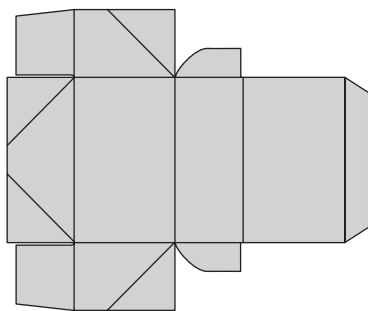
10.42



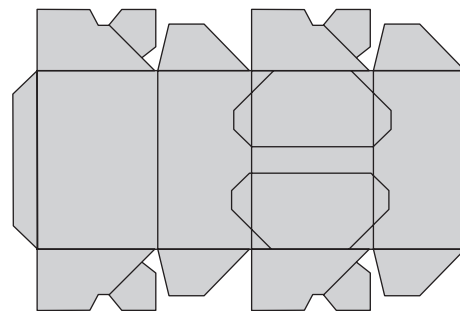
10.43



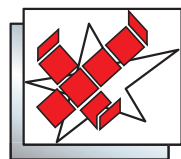
10.44



10.45



10.46



**VEGA**  
G R O U P

**VEGA S.R.L.**

VIALE DELL'INDUSTRIA, 6

20037 PADERNO DUGNANO ▪ MILANO ▪ ITALY

TEL. +39 02 99046212 ▪ FAX +39 02 99046202

COMM@VEGAGROUP.IT ▪ WWW.VEGAGROUP.IT