

Automatic Reverse Piling and Sorting Machine



For de-stacking, sorting and reloading previously laminated and batch wise in an alternating sequence stacked sheet batches back to a pallet - sorted in just one direction, with sufficient productivity.



turning & sorting unit of the machine

conveyor suction belts for advancing and shingling the batches of sheets which had been reversed and to insert the sheets into the down-stacker

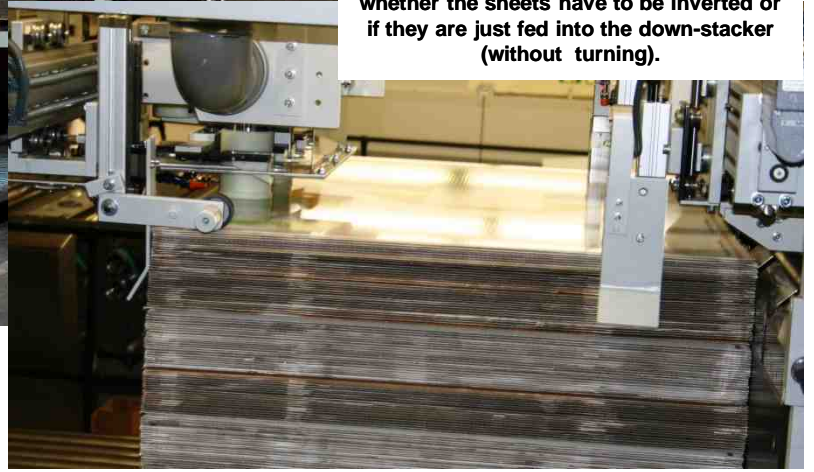




Sheet Feeder

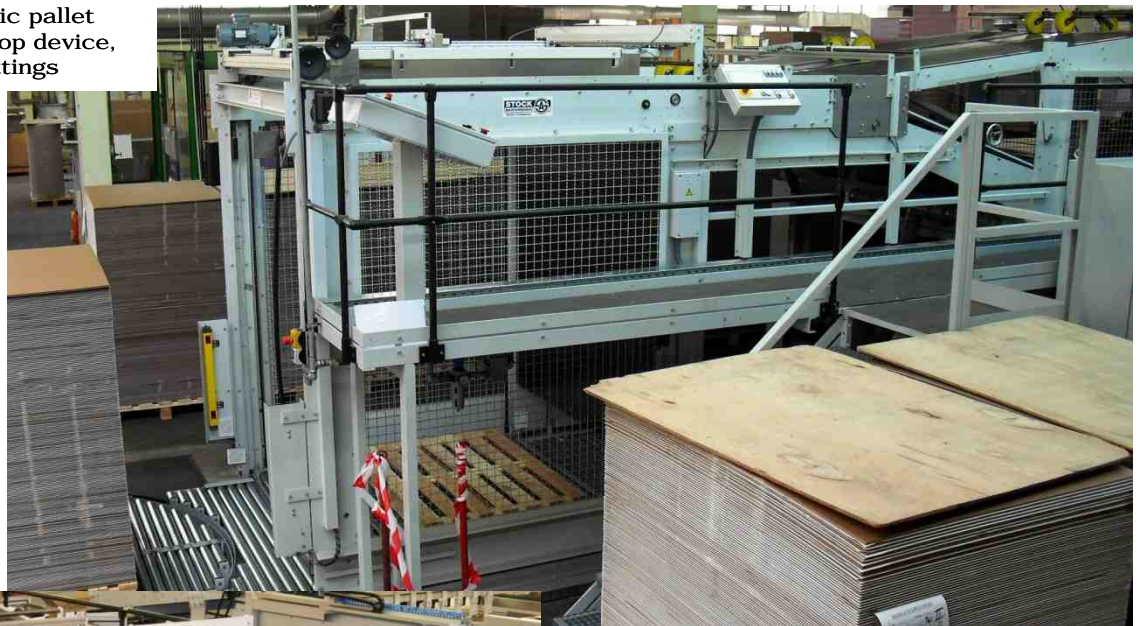
with automatic pallet change,
without non-stop device, manual /
motorized format settings

**Each sheet is fed by a sheet separator
and detected by a scanner to proof
whether the sheets have to be inverted or
if they are just fed into the down-stacker
(without turning).**



Down-Stacker

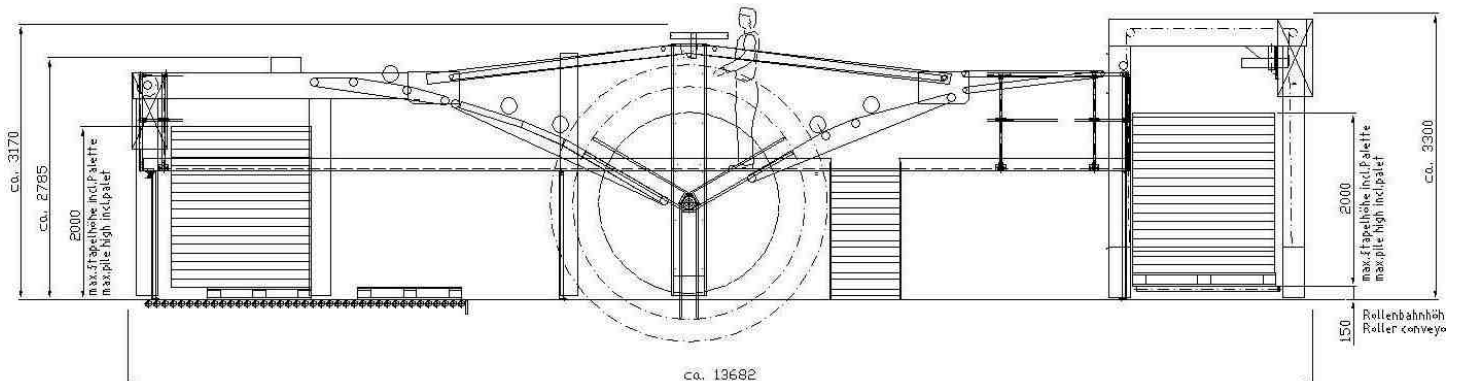
prepared for automatic pallet
change, without non-stop device,
manual format settings



Automatic Reverse Piling and Sorting Machine model SSR 7 - for max. sheets length & width of 1,620 mm, max. performance level of up to 5,000 sheets / hour.



It is possible to integrate the reverse piling and sorting machine into an automatic logistic system for feeding an automatic die-cutter (autoplaten).



STOCK Maschinenbau GmbH
Tannenwaldstraße 8; D - 36323 Grebenau - Eulersdorf

Telefon: +49 (0) 6646 96 08 0; Fax: +49 (0) 6646 96 08 33
E-Mail: info@Stock-Maschinebau.de; Internet: www.stock-maschinenbau.de

Made in GERMANY