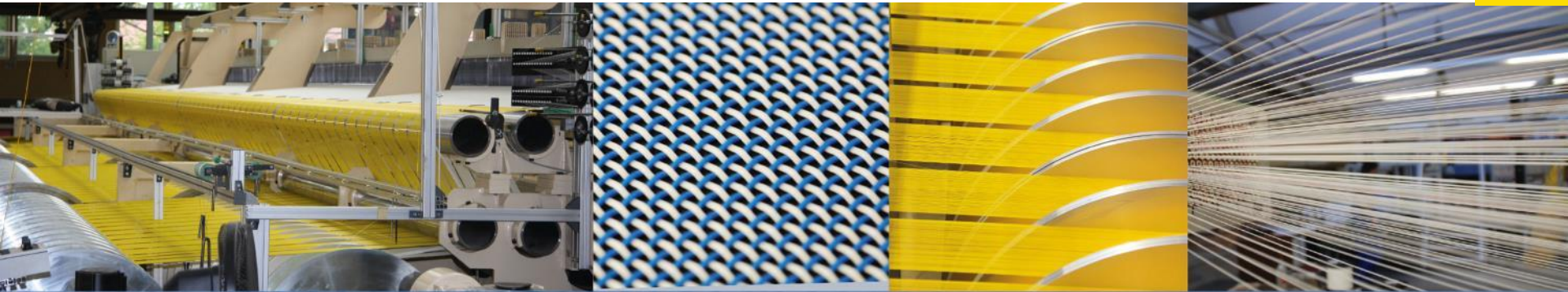


# VILLFORTH

Siebtechnik GmbH



## Areas of application of our products

Villforth Siebtechnik GmbH

# VILLFORTH – family business since 1870

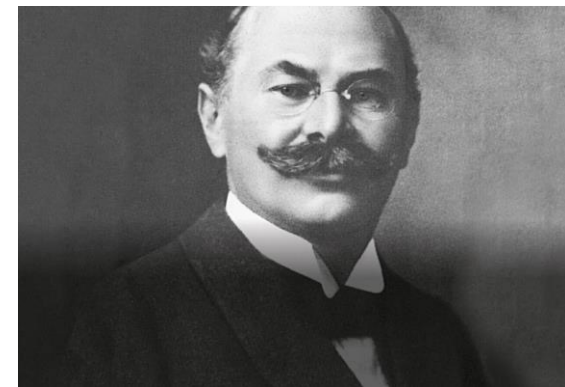
- Villforth Siebtechnik, located in Reutlingen, can look back on 150 years of company tradition, now managed by the fourth generation
- CEO and owner Thomas Villforth operates the company which employs 93 staff
- Our fabrics - raw materials and production process - are 100 % **Made in Germany**



CEO and owner  
Thomas Villforth



Company building in  
Reutlingen



Founder  
Peter Villforth Senior



# VILLFORTH – world technology leader



Thomas and Lukas Villforth



Most modern weaving machine in the world

- We work hard to remain a leading global manufacturer of high-tech fabrics for the pulp and paper industry
- Our R&D department is working on new products and the optimisation of fabric properties to get the best out of your paper machine

# Areas of Application

## Forming fabrics for

- Fourdrinier
- Gap former
- Hybrid former
- Crescent former
- C-Wrap / S-Wrap former
- Suction breast roll
- Inclined wire
- **TAD-dryer fabrics**



# Areas of Application

## Fabrics for Stock Preparation

- Drum filter / thickener
- Twin wire press
- Washer (VarioSplit / DNT / Black Clawson)



## Synthetic Shrink Sleeves for

- Forming roll
- Dandy roll



# Areas of Application

## Dewatering Fabrics for Pulp Production

- Pulp dryer
- Pulp washer (e. g. Kemi Washer)



## Fabrics for Chip Board Production

- Ventilation belt
- Transfer wires





# Areas of Application

## Fabrics for Nonwoven Production

- Spun bond and spun lace forming
- Wet laid and air laid forming
- Melt blown forming
- Dryer fabrics
- Saturator belts
- Spray cabin



## Fabrics for Sludge Presses

- Waste water treatment
- Filter
- Thickener
- Twin wire press



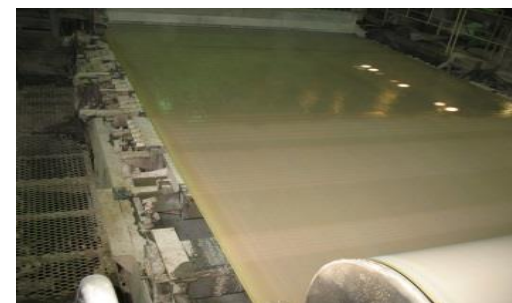
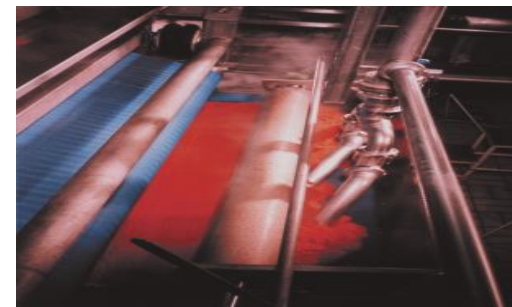
# Areas of Application

## Fabrics for Food Industry

- Fruit and vegetable juice production
- Cheese production

## Other Applications

- Bonded leather
- Particle board
- Conveyor belts
- Glass fibre production
- Fabrics for light weight roofing systems
- Carpet dyeing
- Transformer board (PEEK/PPS)





# V-POWERLINE

## DURATEC

- Modified machine side for long fabric life



Reduce costs with longer fabric life

or

## *eRun*

- Special yarn material for smoother running
- Combines the advantages of polyester (PET) and polyamide (PA)



Reduce costs with lower power consumption



## TOPAZ<sup>©</sup>NT

- Covers the filaments and the cross-over points
- Easier fabric cleaning and increased dimensional stability



Reduce costs with easier cleaning

or

## *VexClean*

- PET based yarn material which greatly simplifies fabric cleaning

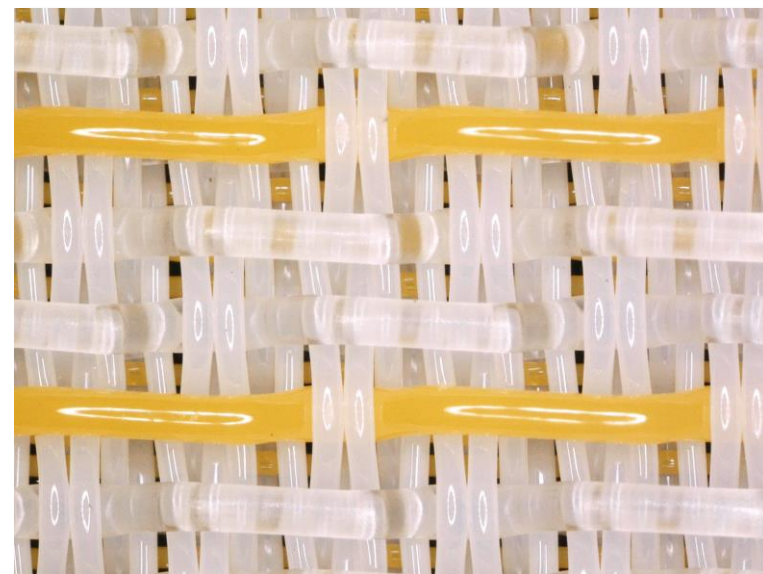


Reduce costs with less downtime and chemical cleaning

# DURATEC

## For increased fabric life

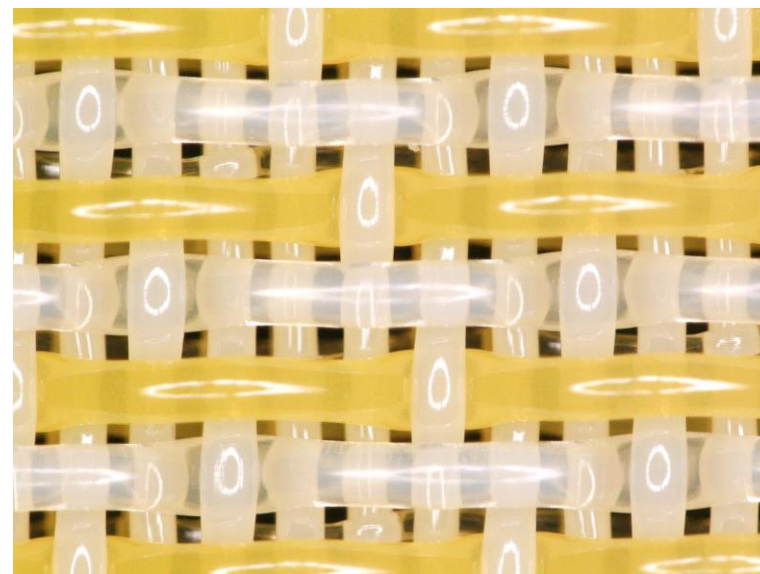
- Machine side modified for long fabric life
- Specially modified PA yarns guarantee longest life times
- PET yarns ensure dimensional stability
- Reduce machine downtime with increased life potential of the fabric



*eRun*

## For reduced power consumption

- Newly developed yarn material
- Low coefficient of friction results in reduced drive power
- High dimensional stability
- Forms monoplanes running side together with the alternating PET yarns
- Favours flat lying fabric – no more edge curl

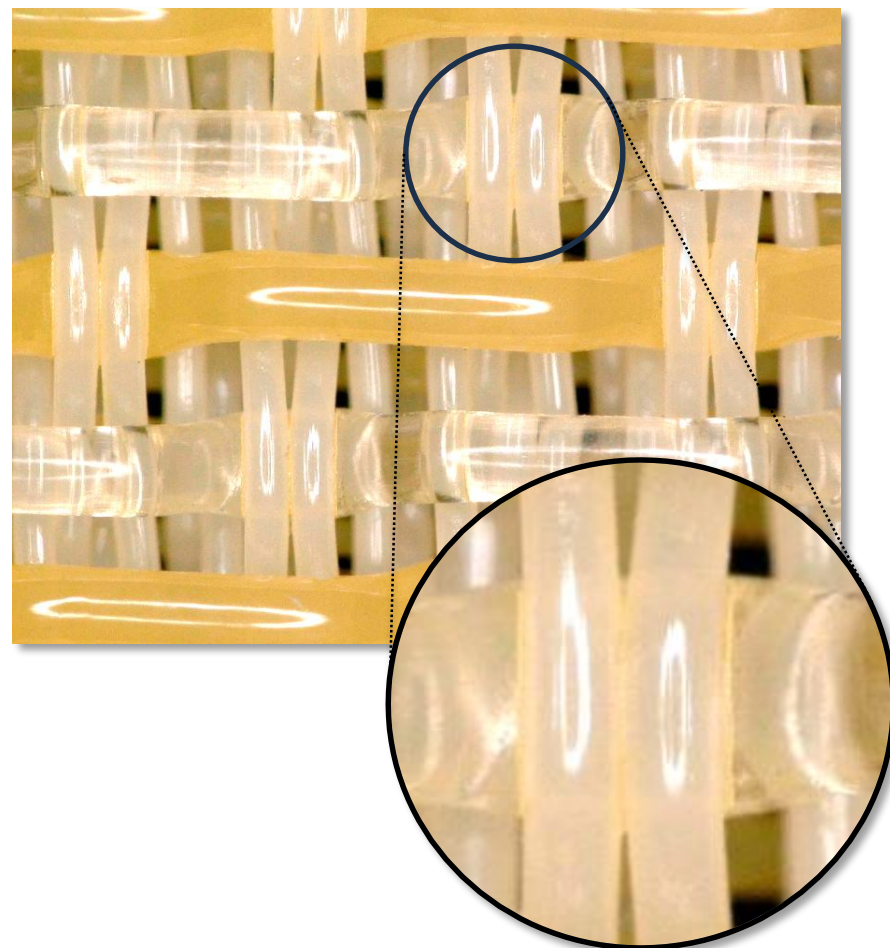




# TOPAZ<sup>©</sup>NT

## For a cleaner fabric and increased fabric stability

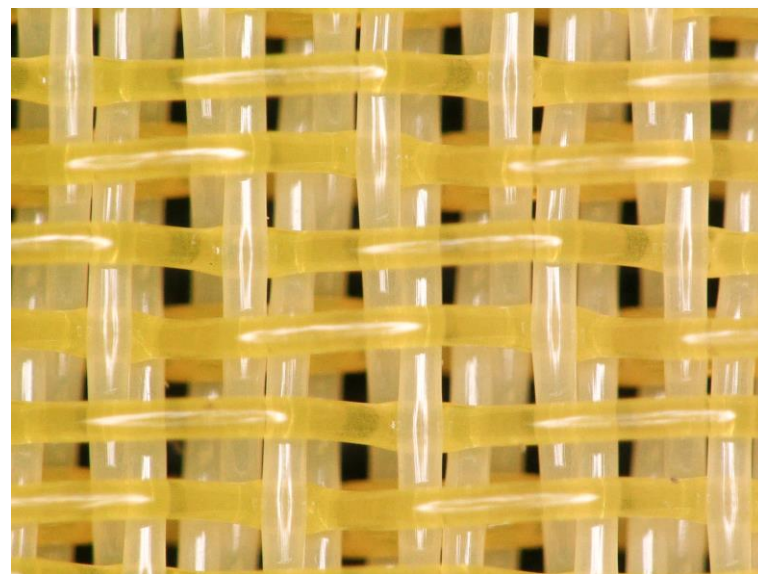
- Covers the yarns and strengthens the cross-over points
- Increased dimensional stability by approximately 30 % in both machine and cross machine direction
- Easy fabric cleaning – prevents contaminants or fibres from becoming wedged in the gaps of fabric
- Reduces internal friction and abrasion
- Permanent for the whole fabric life. Resistant to chemical cleaning agents and hp showers



# VexClean

## For a cleaner fabric

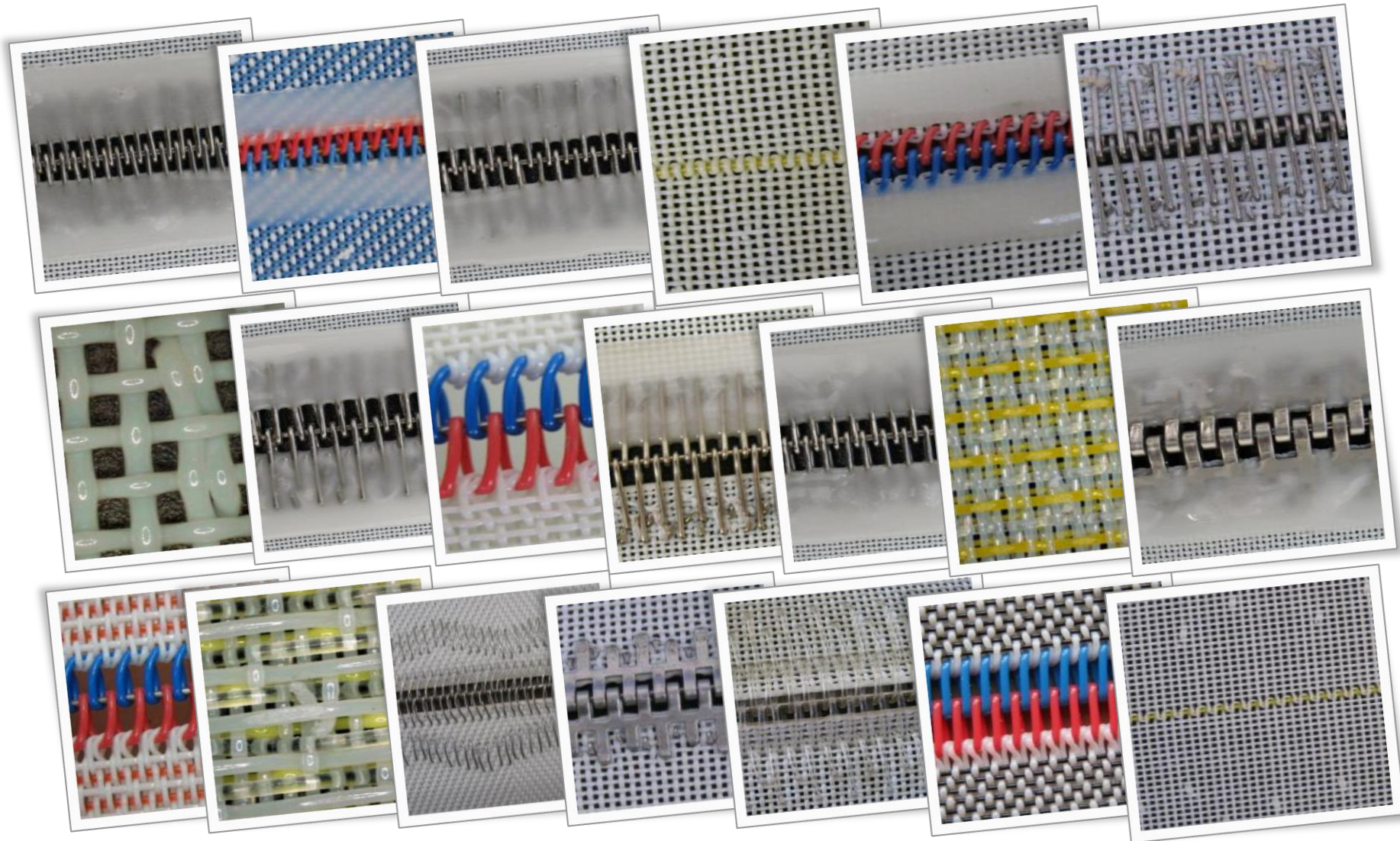
- Newly developed yarn material based on polyester with modified surface characteristics
- Operates on the basic principle of the lotus effect against contaminants without influencing the dewatering negatively
- Recommended solution against the strongest and most difficult contaminants
- Very high resistance to fabric contamination by all types of **resins**







# Seaming solutions - about 50 different seam types





# Your chance – our responsibility

- We will be happy to create a **specialised proposal** for a tailor- made **VILLFORTH** fabric.
- You will benefit with a **special trial discount**.
- We would be proud to **assist** you on site during the **installation** of your **VILLFORTH** fabric on the machine.

